

Cutaneous Quiz

What is the standard probe position for the temples?

A =



C =



B =



What is the standard probe position for the temples?

A =



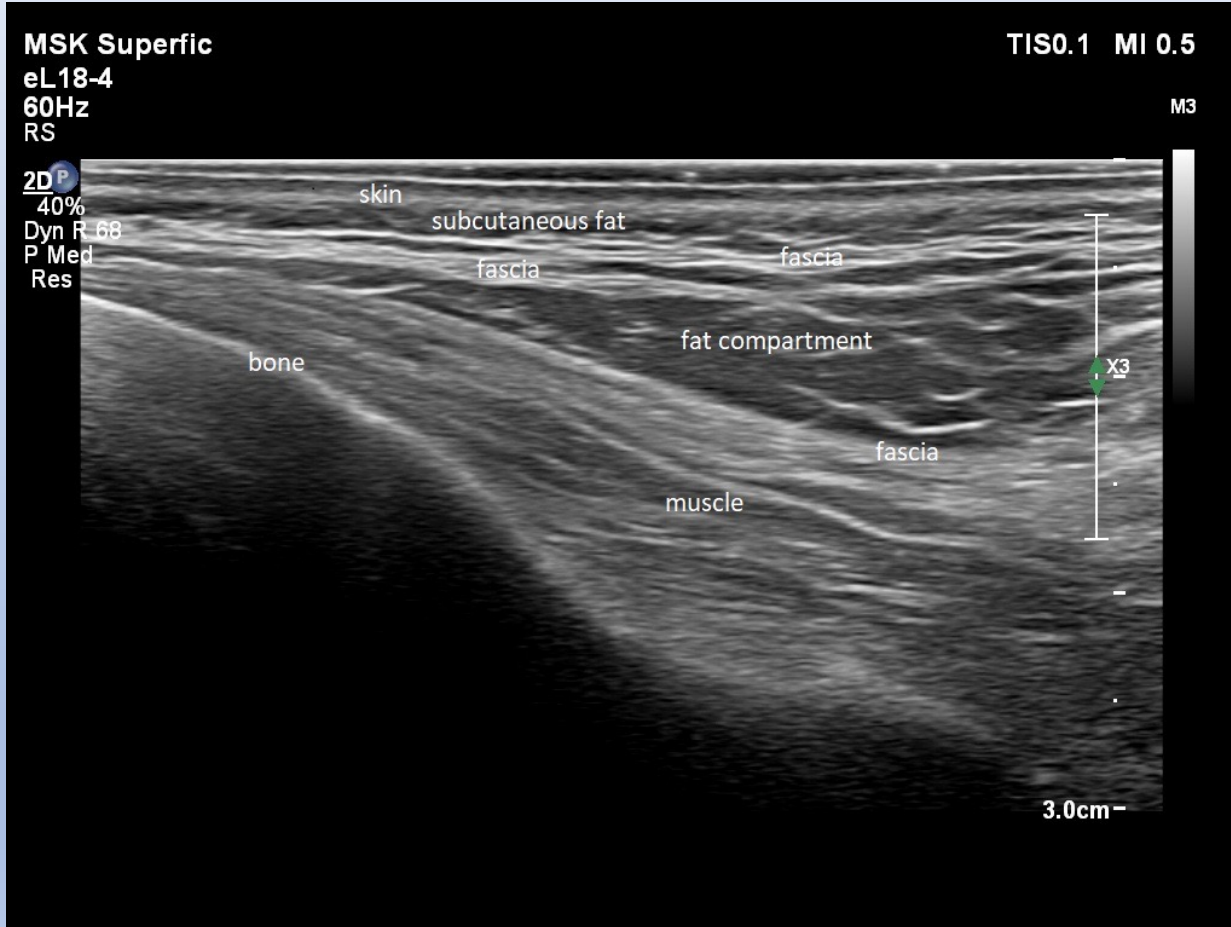
C =



B =



What is the standard probe position for the temples?



C =



When the probe position is correct, the first anatomical structure visible in the midface is

A = Facial artery

B = Zygomatic major muscle

C = Infra-orbital foramen

When the probe position is correct, the first anatomical structure visible in the midface is

A = Facial artery

B = Zygomatic major muscle

C = Infra-orbital foramen

On ultrasound imaging hyaluronic acid filler looks

A = Hyperechoic

B = Hypoechoic / Anechoic

C = Integrated into the tissue

On ultrasound imaging hyaluronic acid filler looks

A = Hyperechoic

B = Hypoechoic / Anechoic

C = Integrated into the tissue

Ultrasound guided injections are best done

A = using in-line technique

B = with your canule perpendicular to the skin

C = with a long 30G needle

Ultrasound guided injections are best done

A = using in-line technique

B = with your canule perpendicular to the skin

C = with a long 30G needle

In standard position 1, the facial vein is

A = medial to the facial artery

B = lateral to the facial artery

C = sometimes medial, sometimes lateral to the artery

In standard position 1, the facial vein is

A = medial to the facial artery

B = lateral to the facial artery

C = sometimes medial, sometimes lateral to the artery

Echogenicity of the parotid gland shows

A = homogeneous hyperechoic

B = homogeneous hypoechoic

C = heterogeneous hyperechoic

D = heterogeneous hypoechoic

Echogenicity of the parotid gland shows

A = homogeneous hyperechoic

B = homogeneous hypoechoic

C = heterogeneous hyperechoic

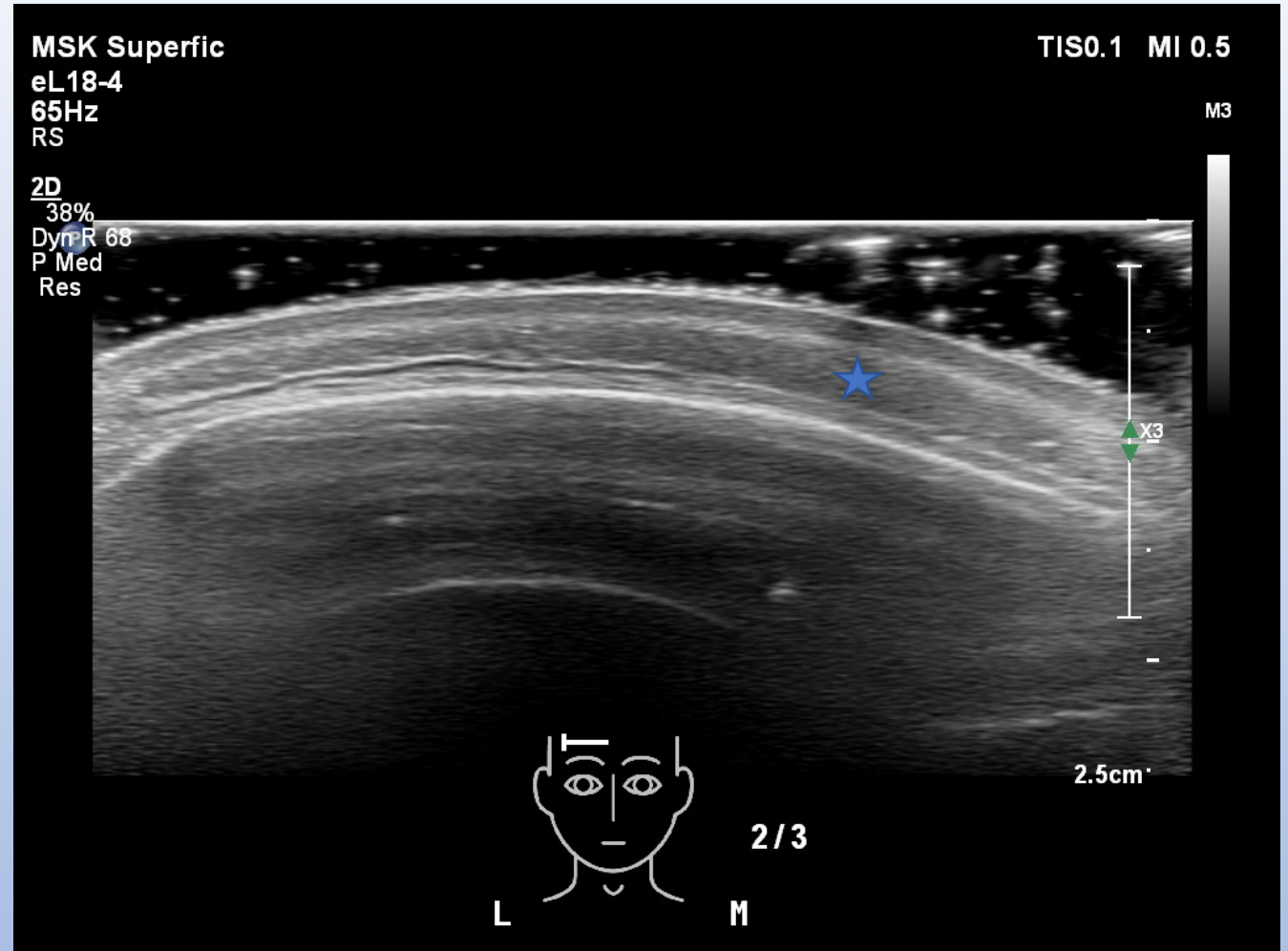
D = heterogeneous hypoechoic

Forehead this asterisks is:

A = artefact

B = superficial fat

C = frontalis muscle

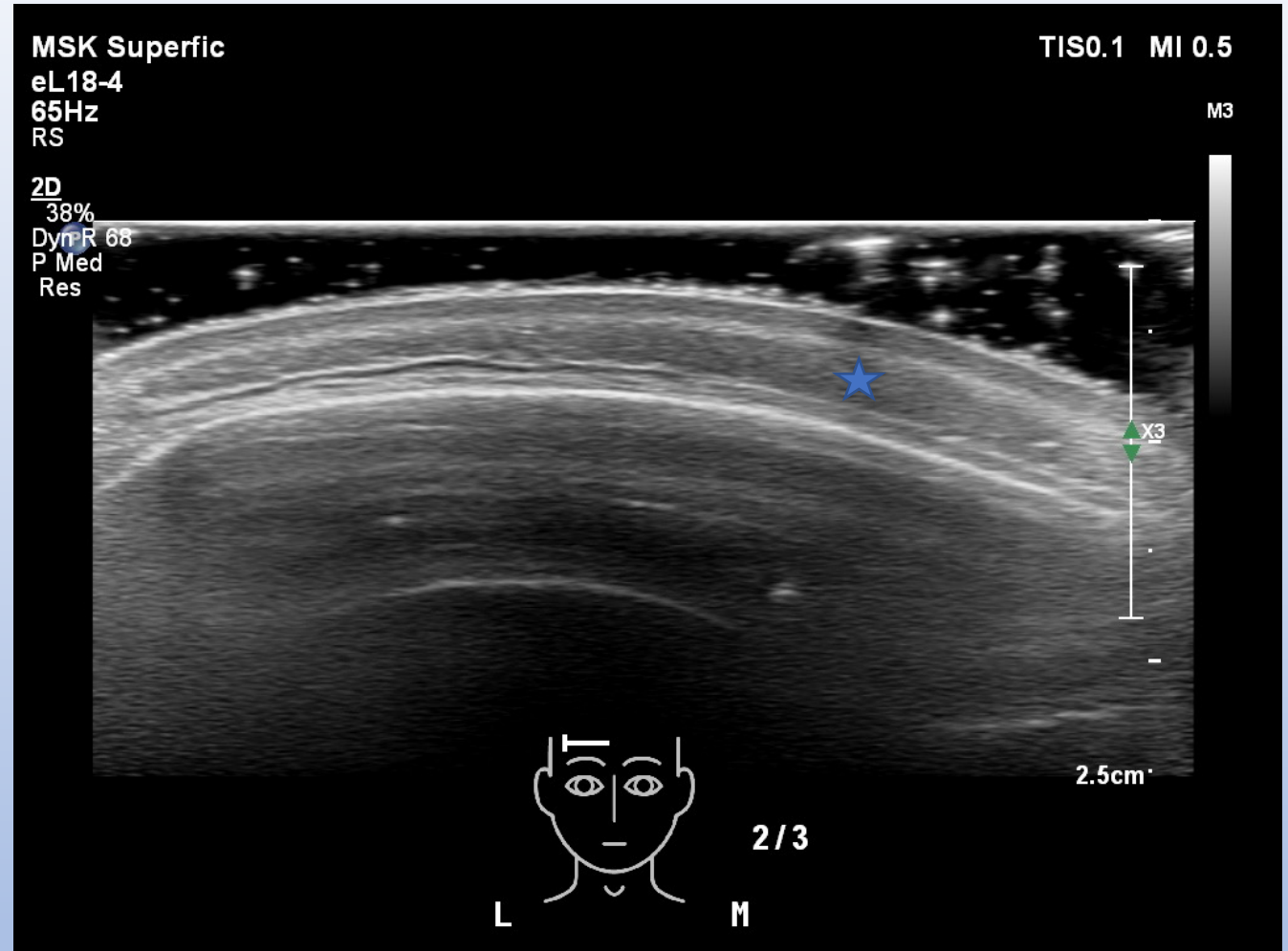


Forehead layering

A = artefact

B = superficial fat

C = frontalis muscle

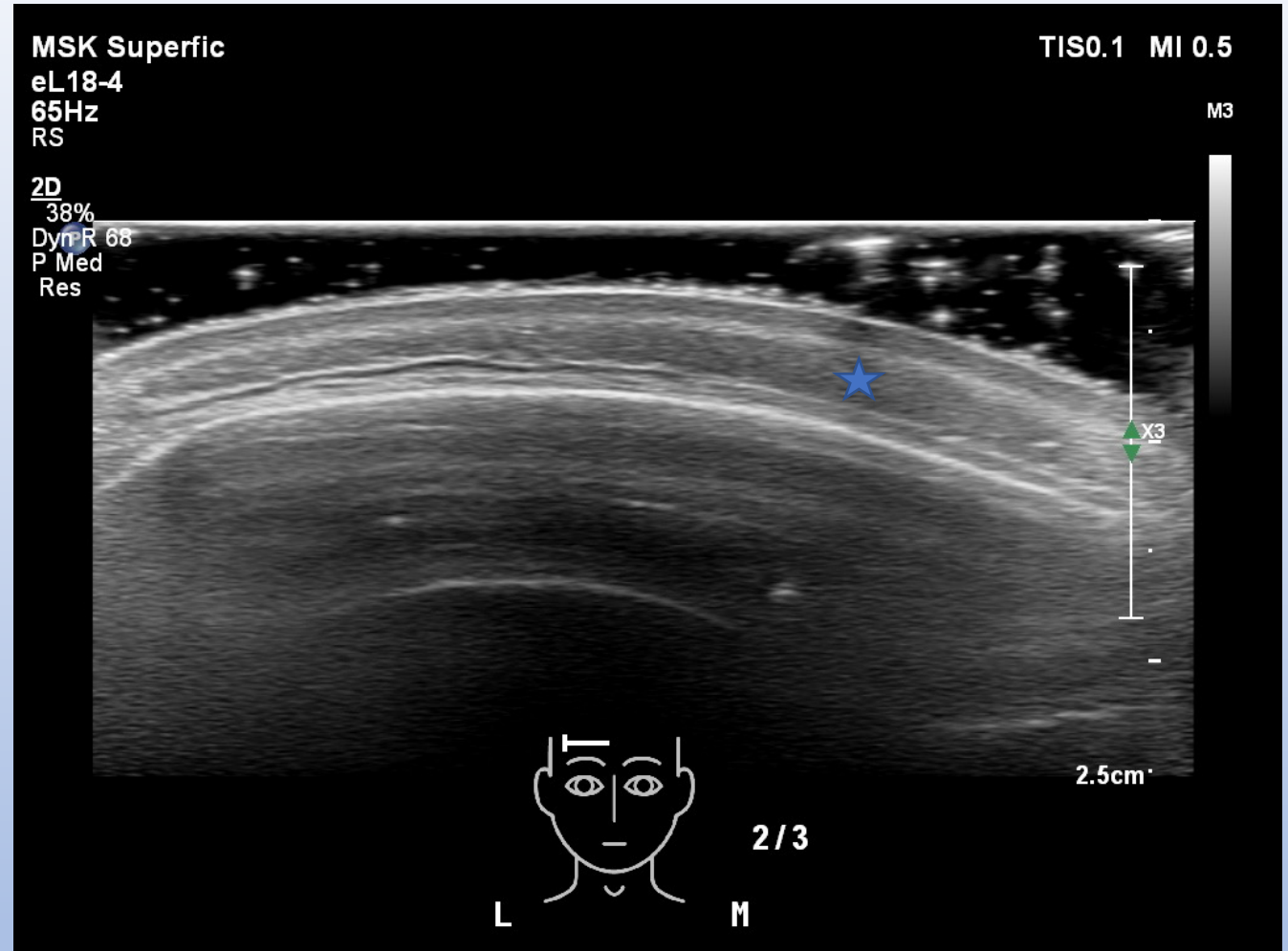


Forehead layering

A = artefact

B = superficial fat

C = frontalis muscle



TEMPLE SV2

47401320200331

Cutaneous

Affiniti 7...

31/03/2020 13:48:43

MSK Superfic

TIS0.1 MI 0.5

eL18-4

What is wrong here?

60Hz

RS

M3

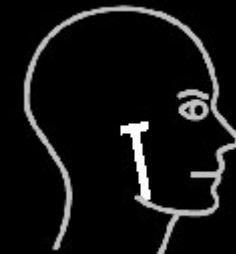
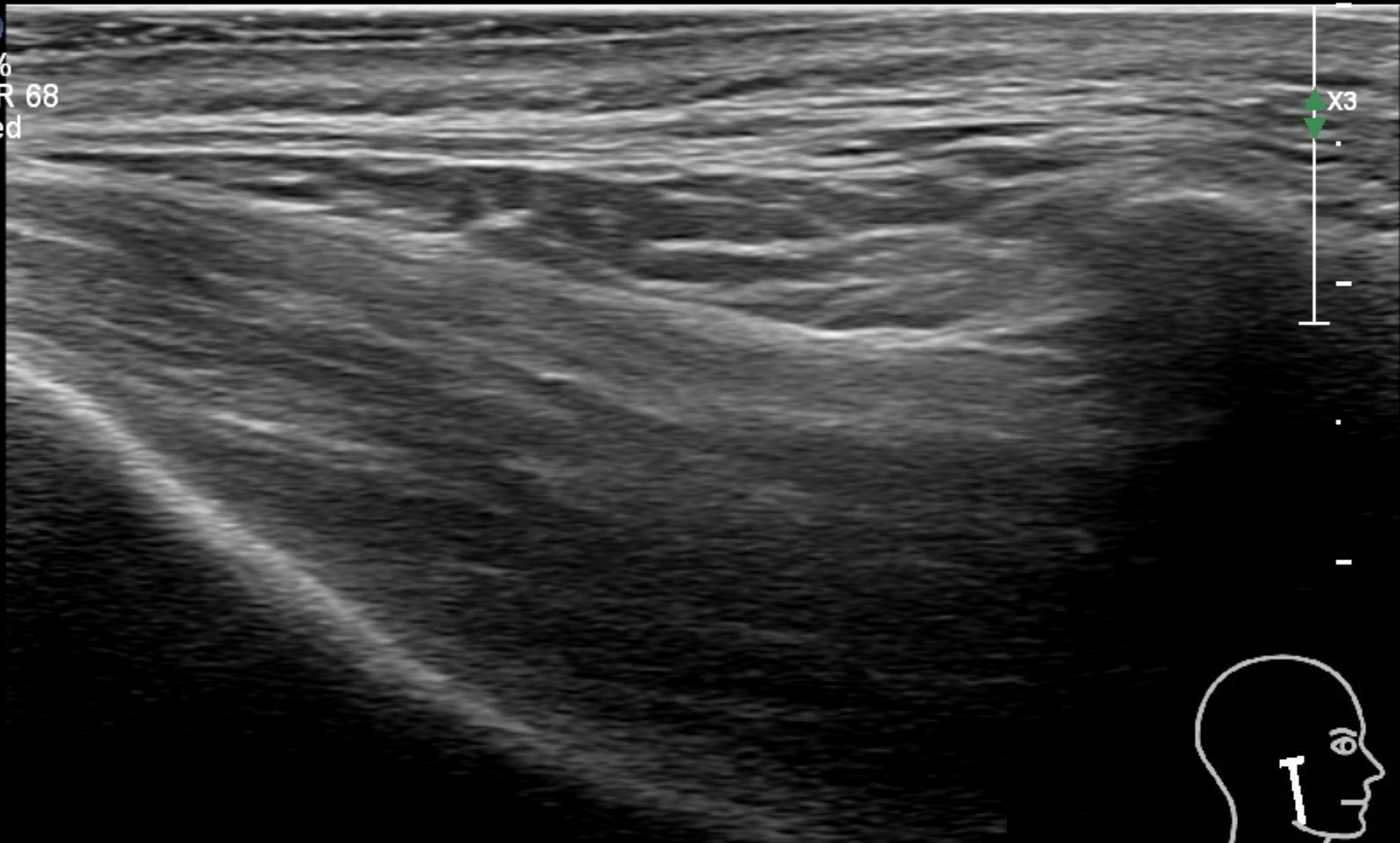
2D P

40%

Dyn R 68

P Med

Res



MSK Superfic

TISO.1 MI 0.5

eL18-4

60Hz

RS

What is wrong here?

M3

2D P

40%

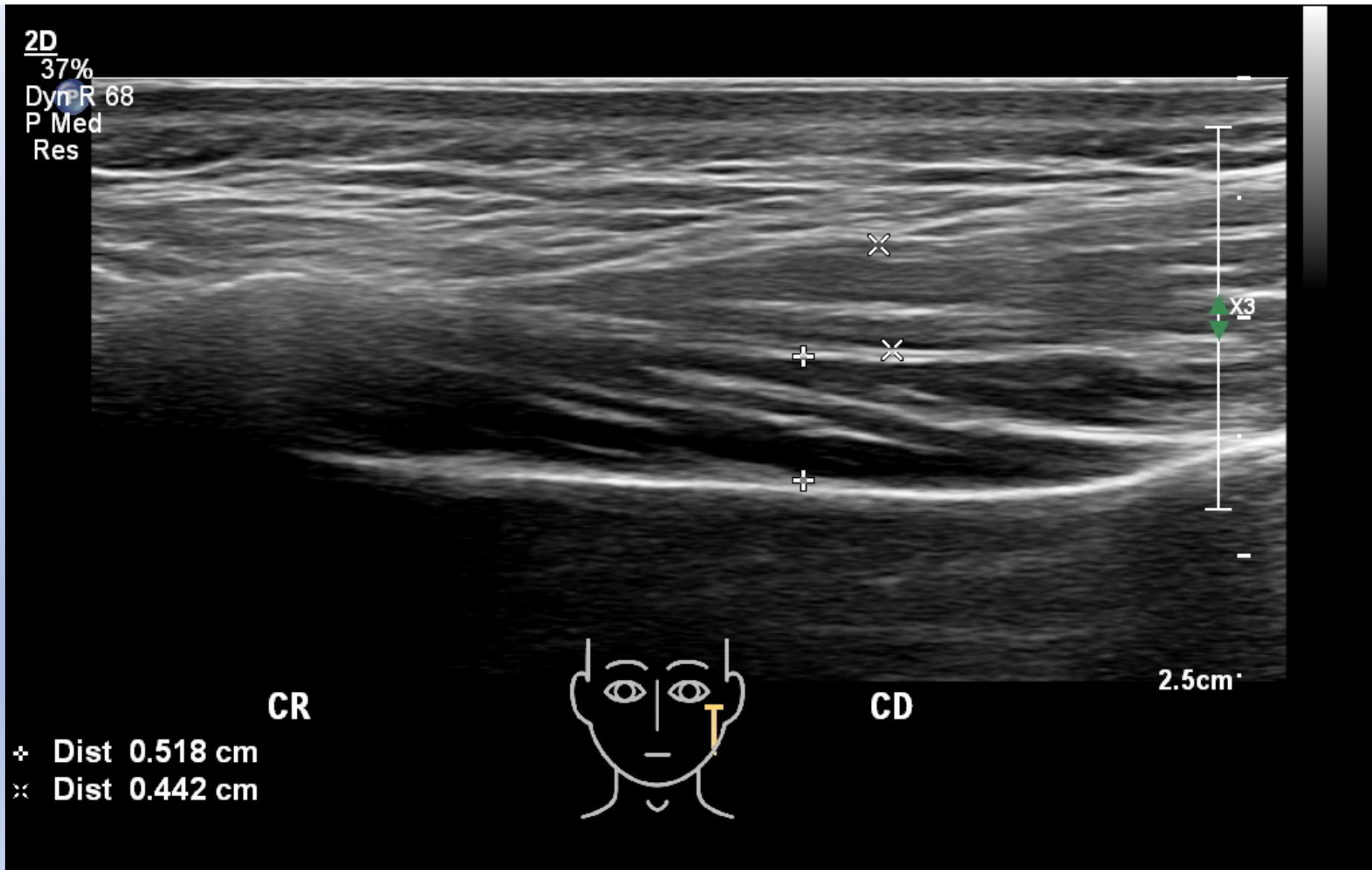
Dyn R 68

P Med

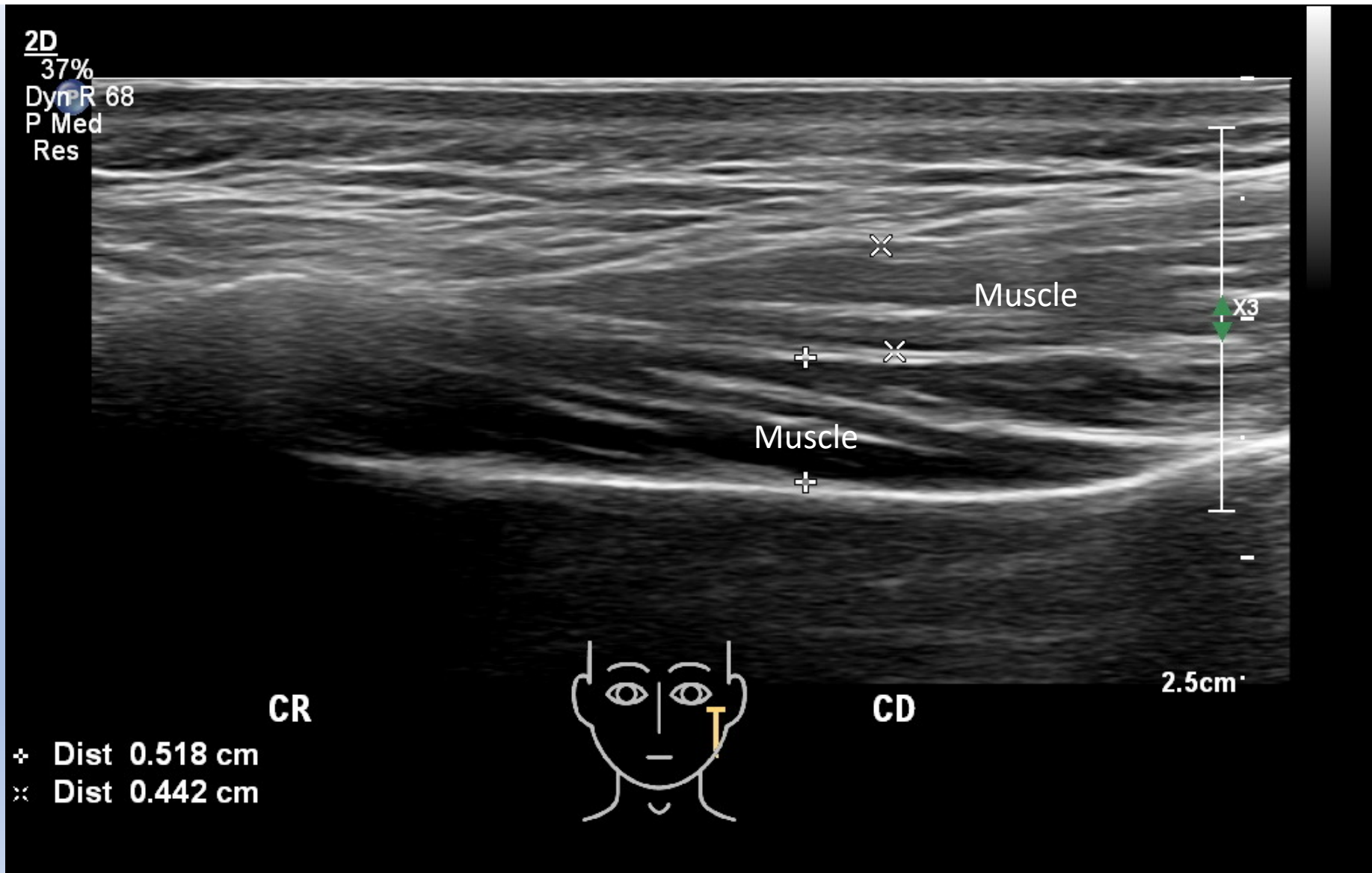
Res



What are the structures between the markers?



What are the structures between the markers?



MSK Superfic

eL18-4

65Hz

RS

2D

38%

DynR 68

P Med

Res

TIS0.1 MI 0.5

M3

Which area is this?



MSK Superfic

eL18-4

65Hz

RS

2D

38%

DynR 68

P Med

Res

TIS0.1 MI 0.5

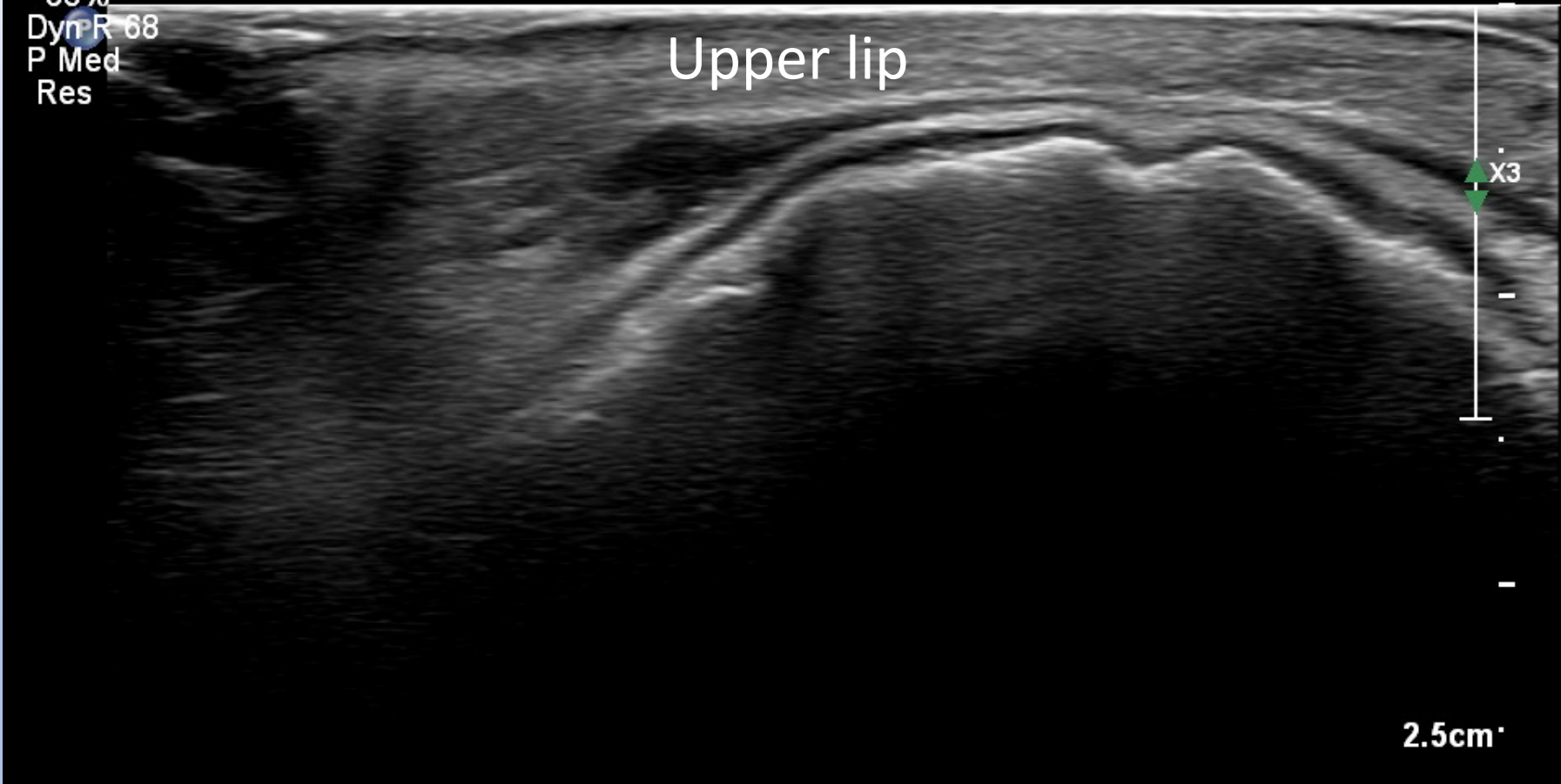
M3

Which area is this?

Upper lip

X3

2.5cm



MSK Superfic

eL18-4
65Hz
RS

2D

38%
DynR 68
P Med
Res

TIS0.1 MI 0.5

Where is the muscle?

M3



MSK Superfic

eL18-4

65Hz

RS

2D

38%

Dyn R 68

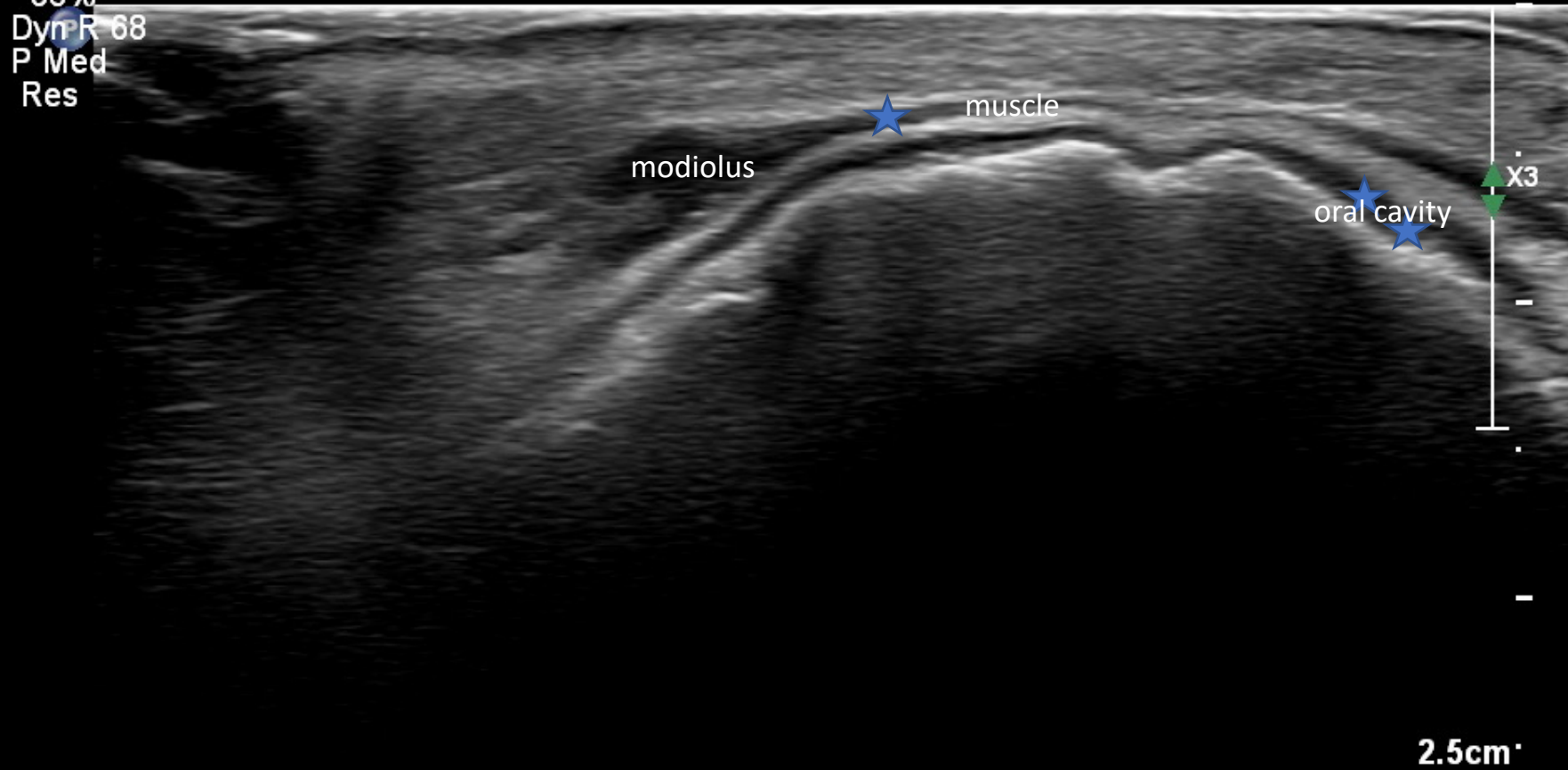
P Med

Res

TIS0.1 MI 0.5

Where is the muscle?

M3



MSK Superfic

TIS0.1 MI 0.5

eL18-4

71Hz

RS

Z 1.2

2D

36%

Dyn R 68

P Med

Res

What are these structures?

M3



2.0cm



MSK Superfic

TIS0.1 MI 0.5

eL18-4

71Hz

RS

Z 1.2

2D

36%

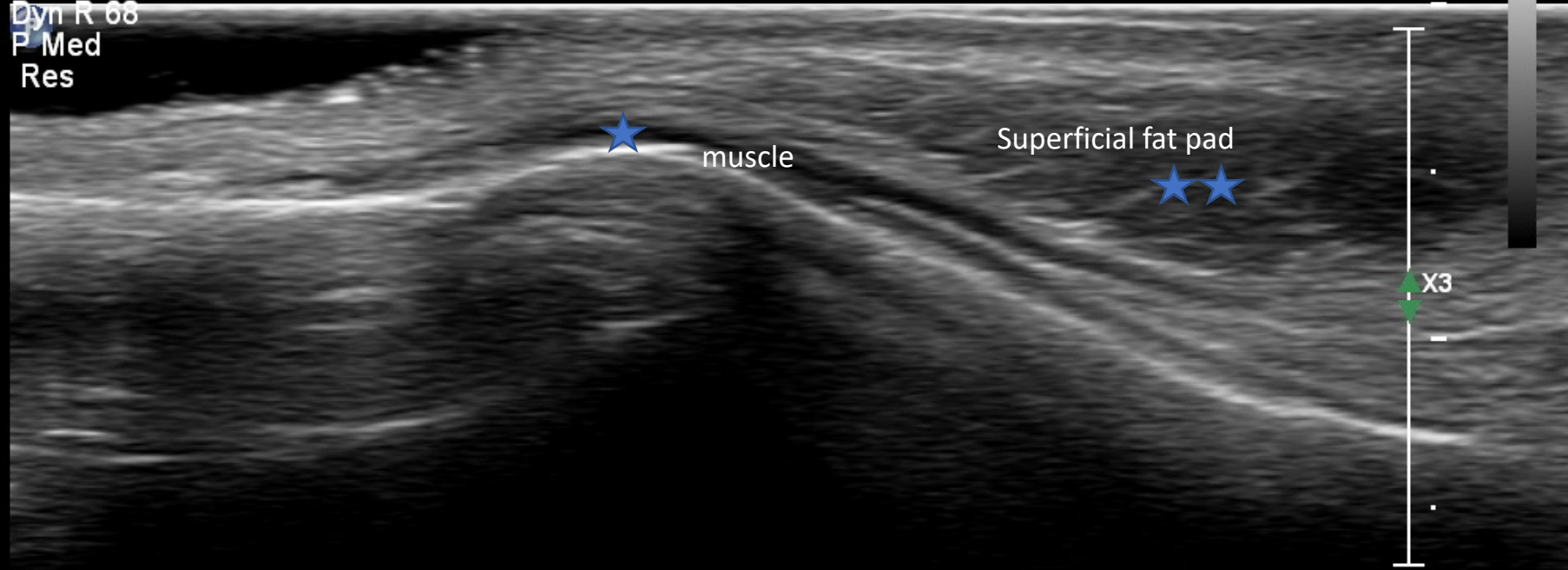
Dyn R 68

P Med

Res

What are these structures?

M3



CR



CD

2.0cm

MSK Superfic

eL18-4

65Hz

RS

2D

38%

Dyn R 68

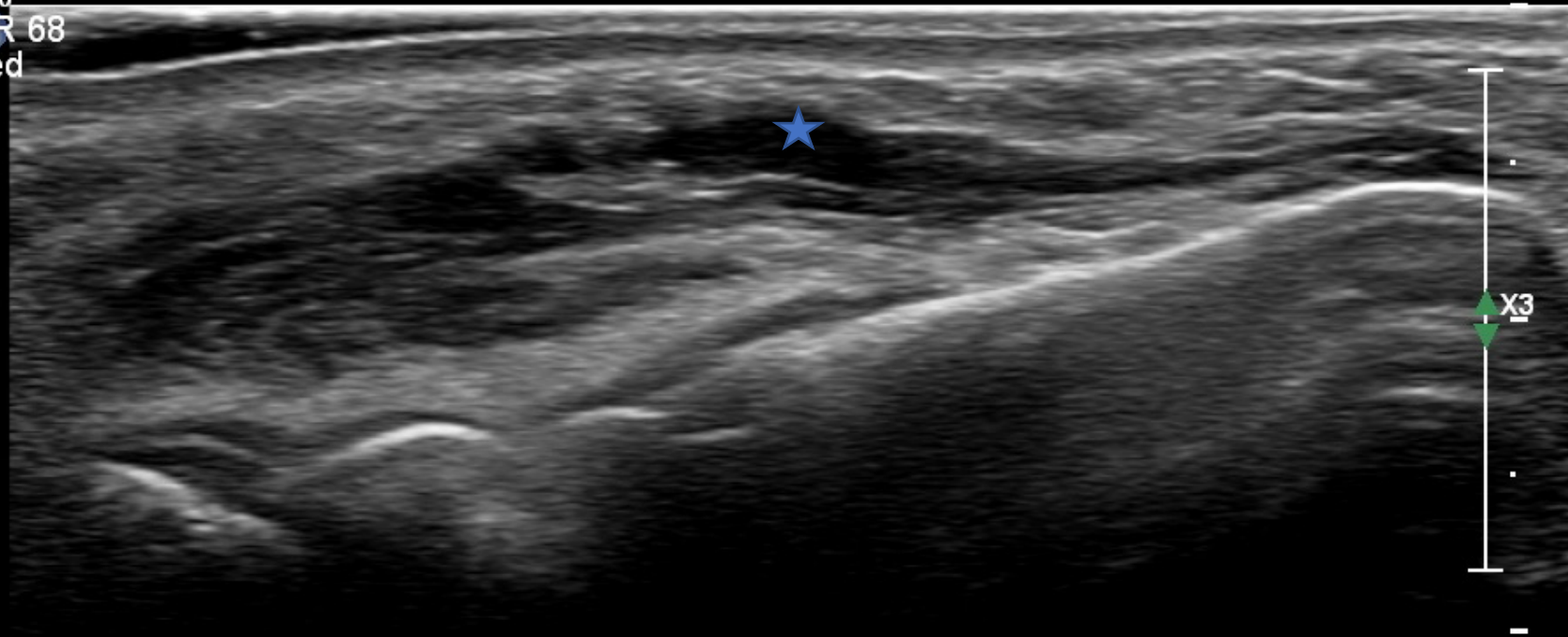
P Med

Res

TIS0.1 MI 0.5

M3

What is this structure?



2.5cm

MSK Superfic

eL18-4

65Hz

RS

TIS0.1 MI 0.5

M3

What is this structure?

2D

38%

Dyn R 68

P Med

Res



2.5cm

MSK Superfic

TIS0.1 MI 0.5

eL18-4

40Hz

RS

What are these structures?

M3

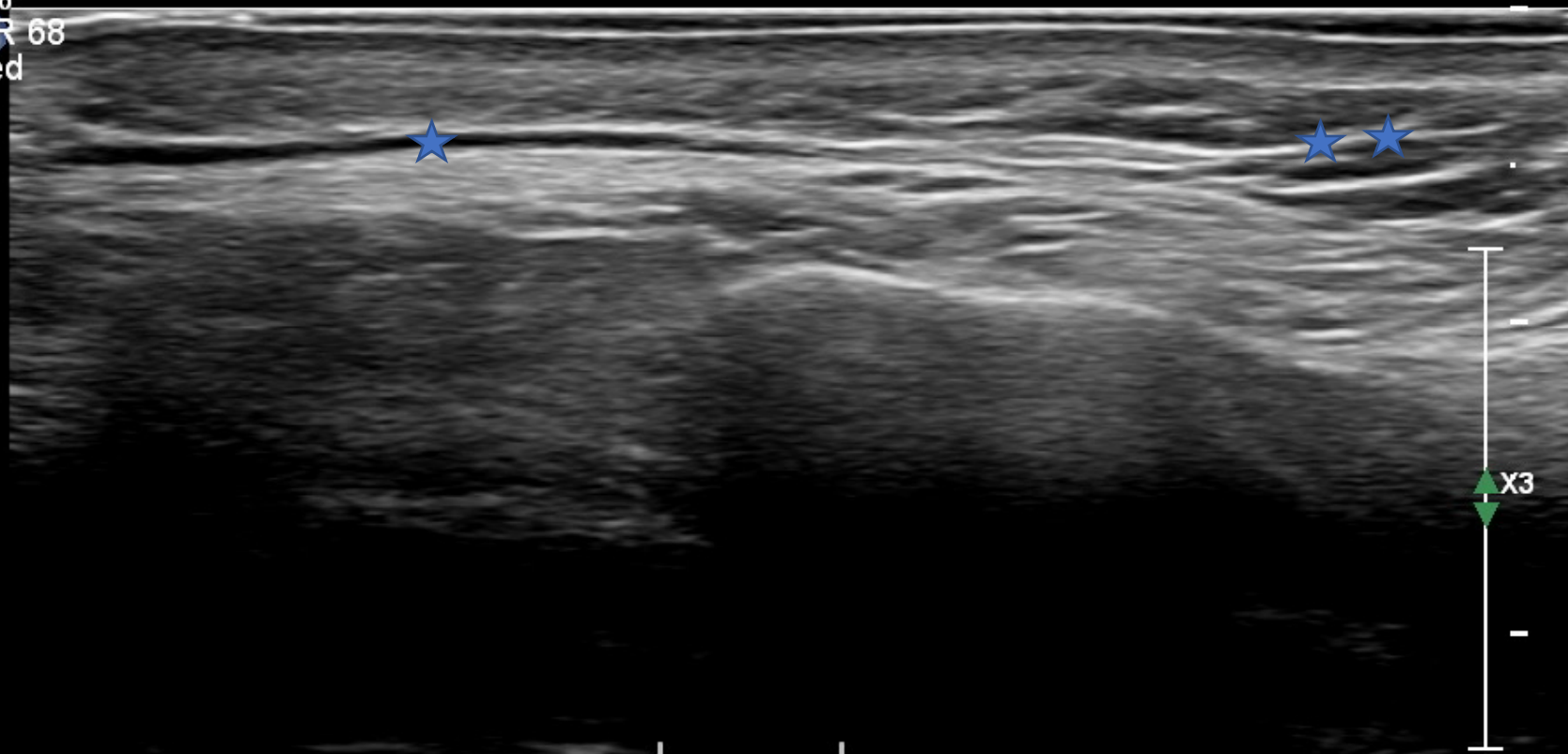
2D

34%

Dyn R 68

P Med

Res



2.5cm

MSK Superfic

TIS0.1 MI 0.5

eL18-4

40Hz

RS

What are these structures?

M3

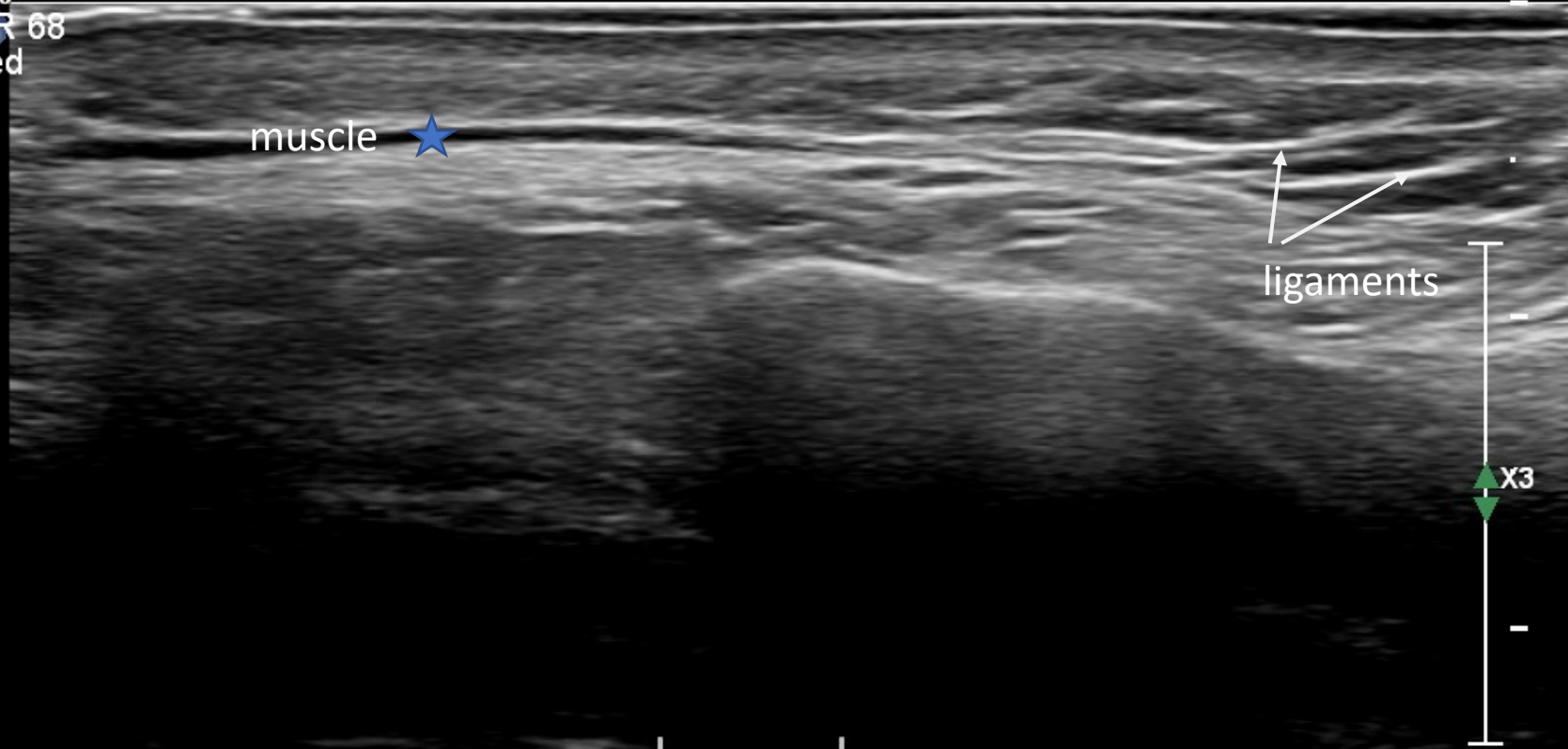
2D

34%

Dyn R 68

P Med

Res



2.5cm

MSK Superfic

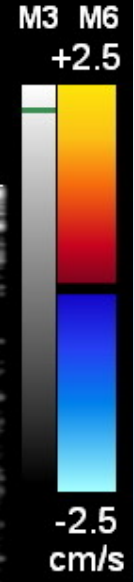
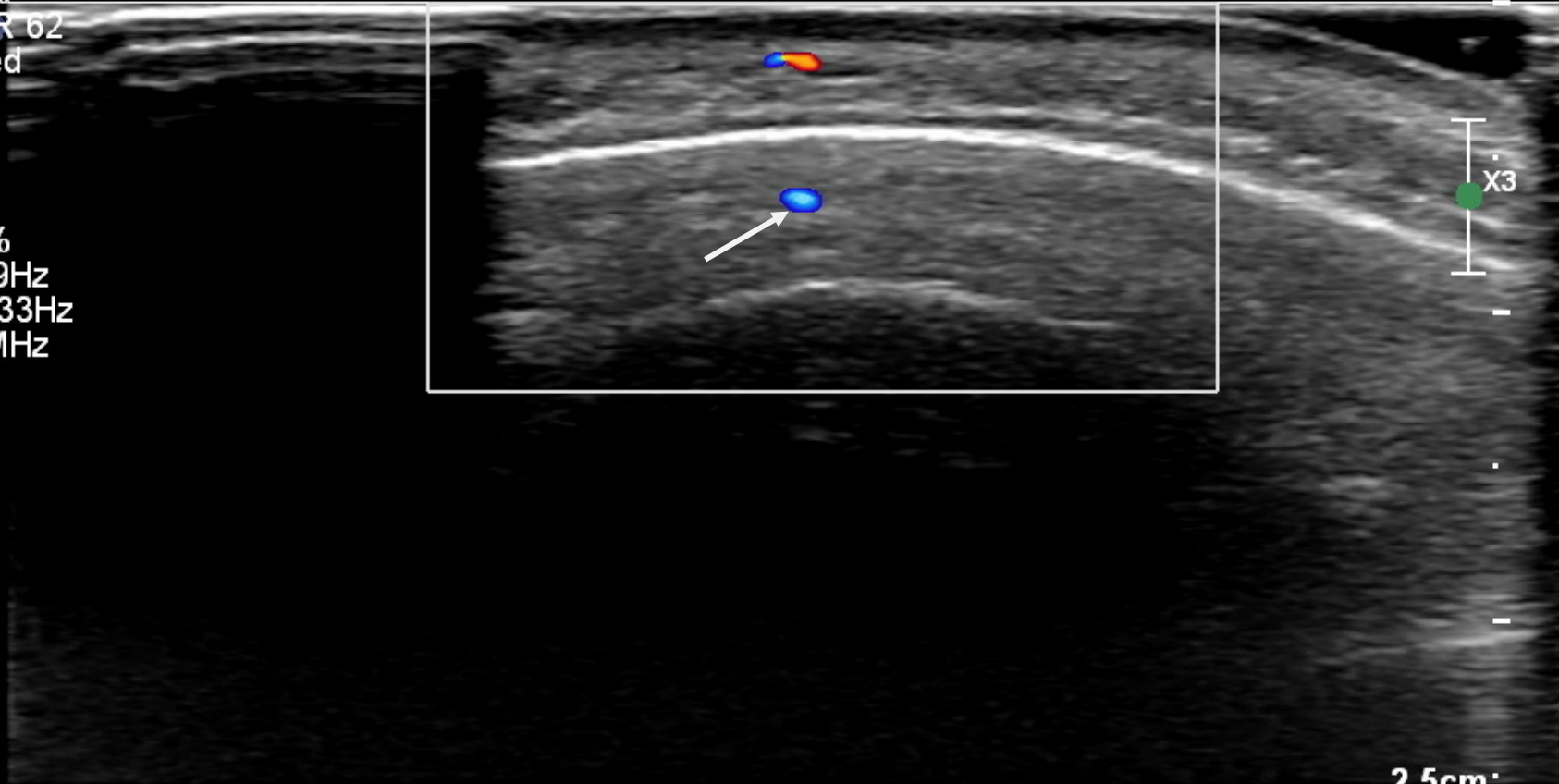
TIS0.3 MI 0.6

eL18-4
18Hz

On the forehead: which artery?

2D
62%
Dyn R 62
P Med
Res

CF
41%
519Hz
WF 33Hz
8.0MHz



MSK Superfic

eL18-4

18Hz

TIS0.3 MI 0.6

On the forehead: which artery?

2D

62%

Dyn R 62

P Med

Res

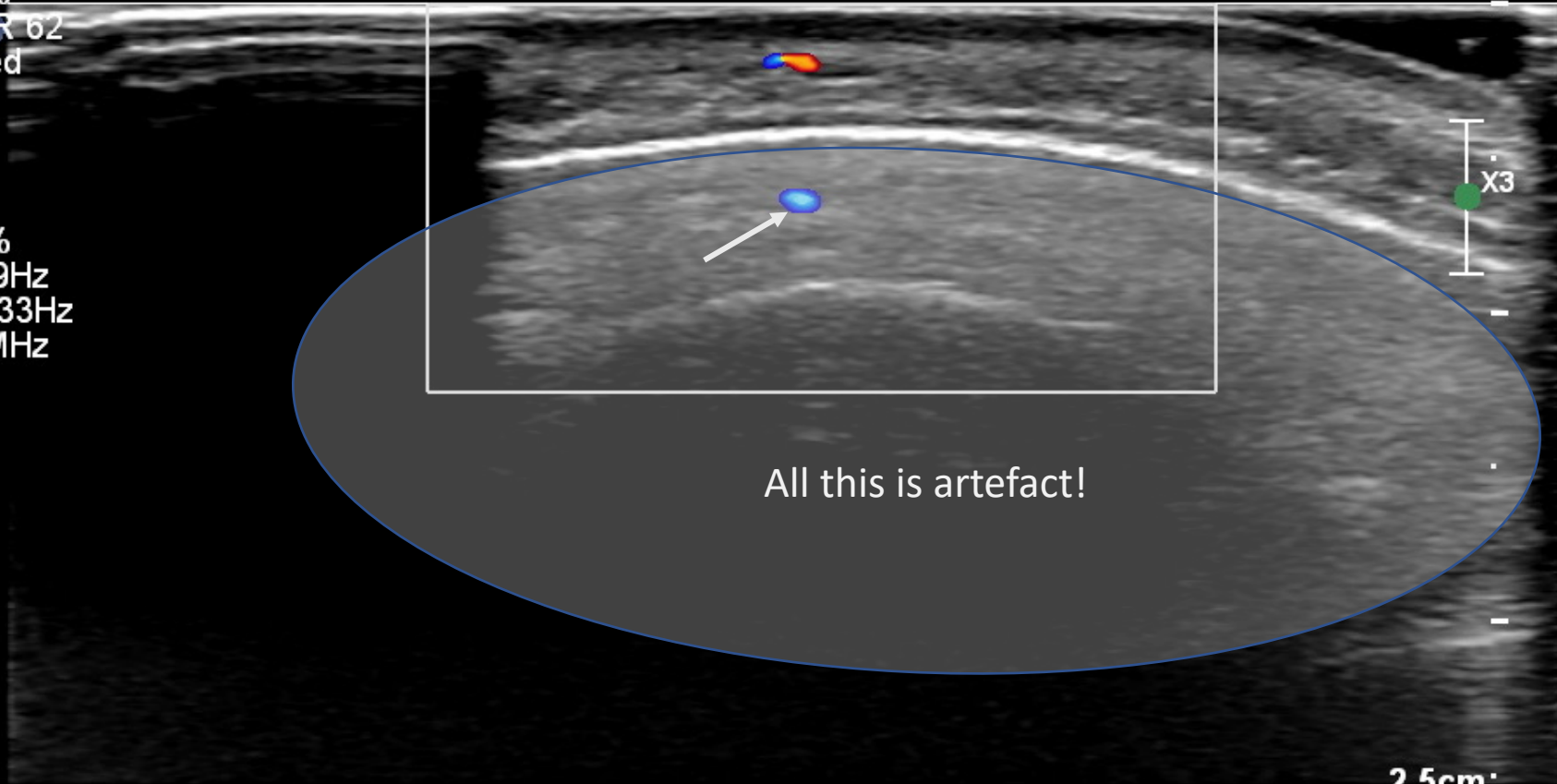
CF

41%

519Hz

WF 33Hz

8.0MHz



All this is artefact!

2.5cm

M3 M6

+2.5

-2.5
cm/s

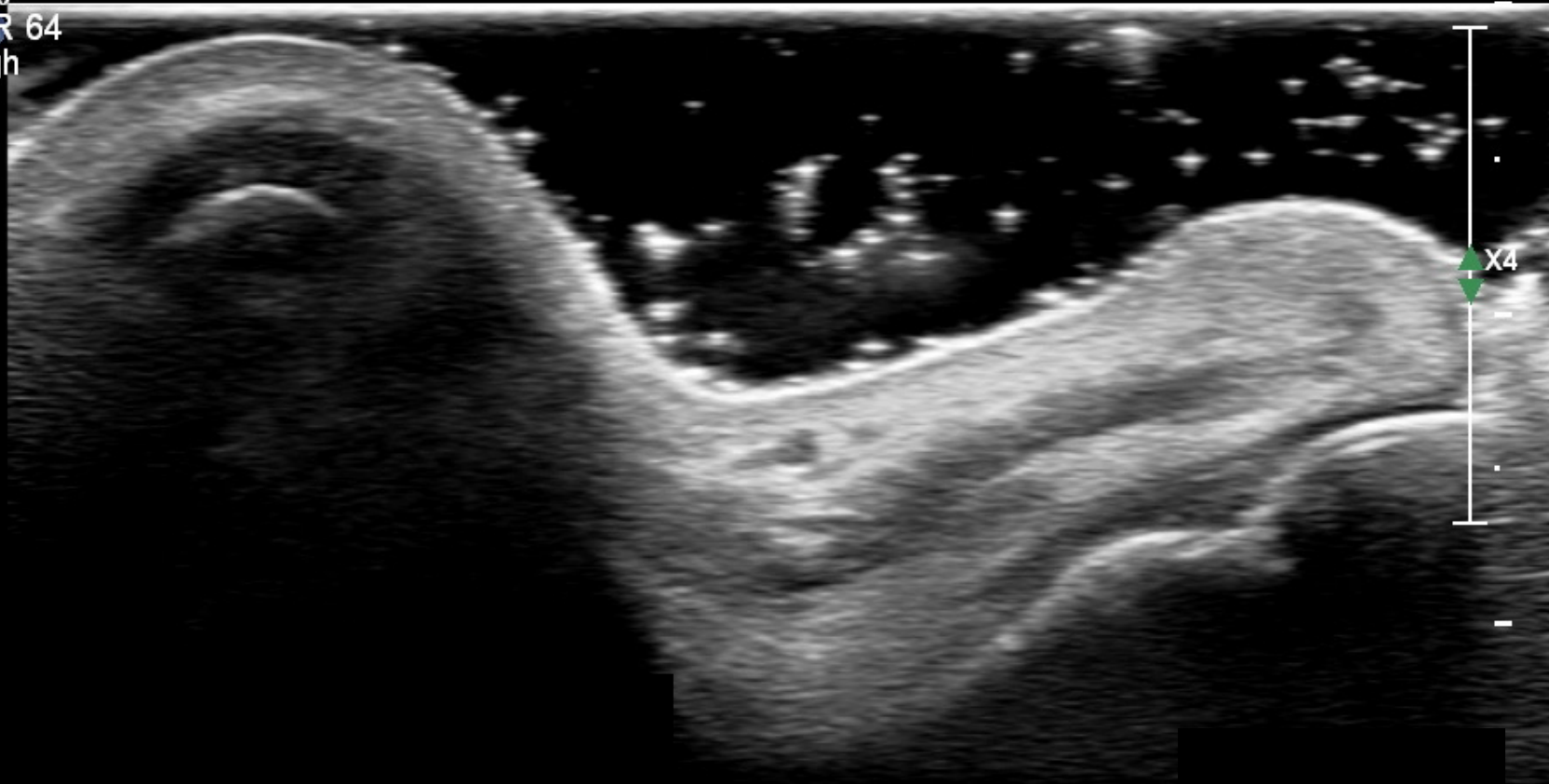
Cutaneous
eL18-4
65Hz
RS

TISO.1 MI 0.5

Which area is this?

M3

2D
38%
Dyn R 64
P High
Res



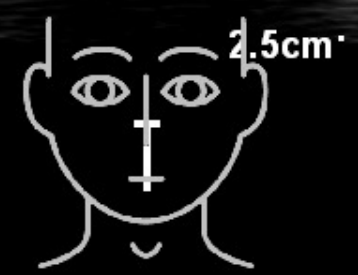
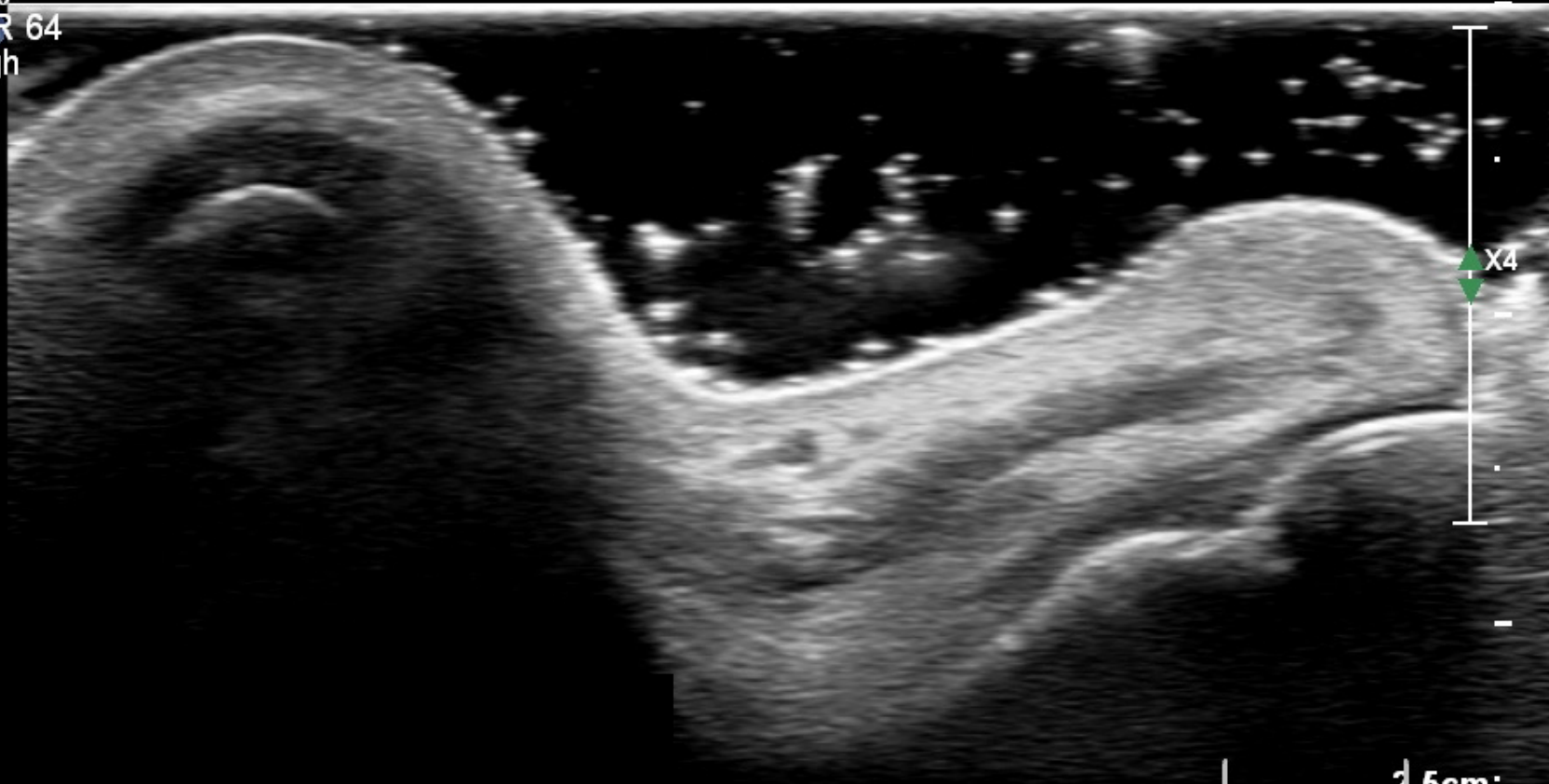
Cutaneous
eL18-4
65Hz
RS

TISO.1 MI 0.5

Which area is this?

M3

2D
38%
Dyn-R 64
P High
Res



Cutaneous

eL18-4

65Hz

RS

TIS0.1 MI 0.5

M3

2D

38%

Dyn R 64

P High

Res



2.5cm

Cutaneous

eL18-4

65Hz

RS

TIS0.1 MI 0.5

M3

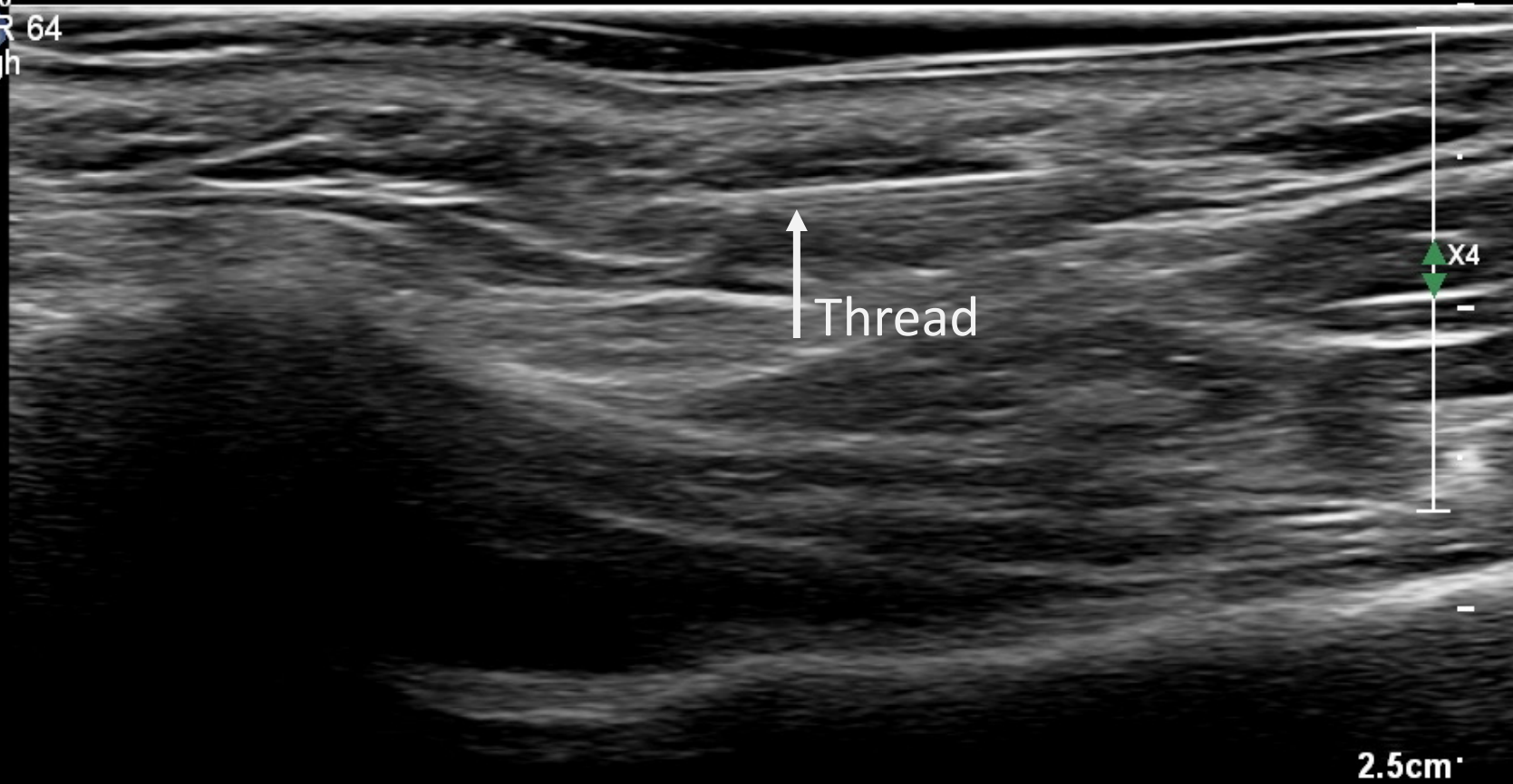
2D

38%

Dyn R 64

P High

Res



↑ Thread

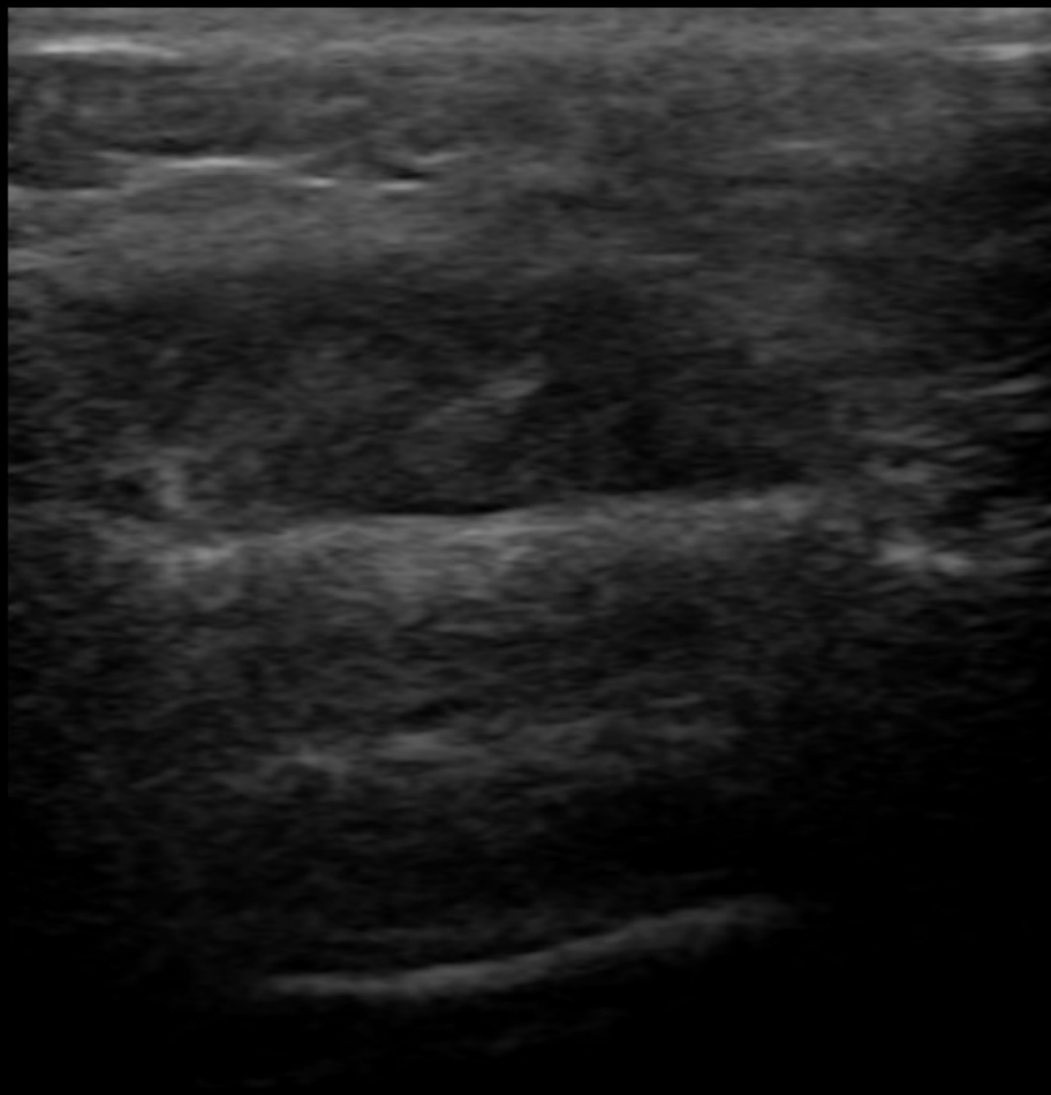
X4

2.5cm

Where is this?

0

P



2

3,5cm

MI
0,9

TIS
0,1

Frame Rate
24 Hz

Gain
63

Depth
3,5 cm

Transducer
L12-4

Preset
Superficial

Power
-0,3 dB

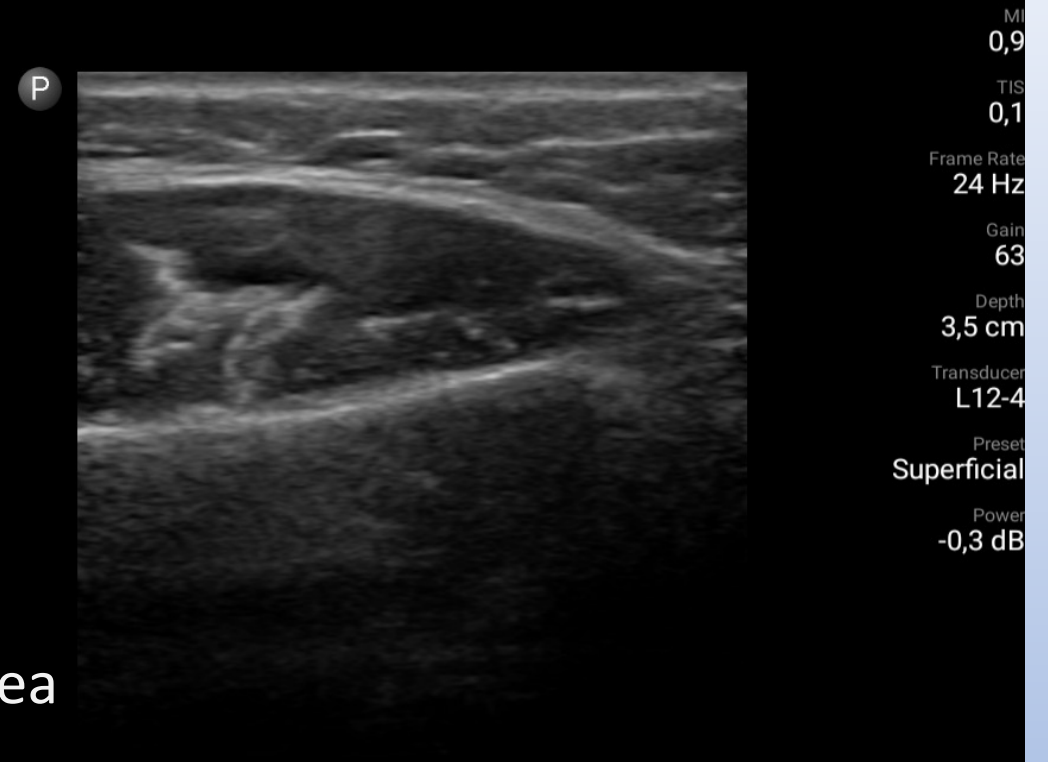
3148245255776 - probe angle

15/05/2021 21:11:52 3148245255776 - probe angle

15/05/2021 21:11:24



MI
0,9
TIS
0,1
Frame Rate
24 Hz
Gain
63
Depth
3,5 cm
Transducer
L12-4
Preset
Superficial
Power
-0,3 dB



It is the jawline area

Same area, different angles

MSK Superfic

eL18-4

65Hz

RS

TIS0.1 MI 0.5

M3

What is this?

2D

35%

Dyn R 68

P Med

Res



✦ Dist 3.25 cm



MSK Superfic

eL18-4

65Hz

RS

TIS0.1 MI 0.5

M3

What is this?

2D

35%

Dyn R 68

P Med

Res



✦ Dist 3.25 cm



Cutaneous Quiz
How did you do?

