

Cutaneous
eL18-4
65Hz
RS

TIS0.1 MI 0.5

M3

2D
38%
Dyn R 68
P Med
Res



2.5cm



TEMPLE SWIFT POINT

Cutaneous

eL18-4

65Hz

RS

TIS0.1 MI 0.5

M3

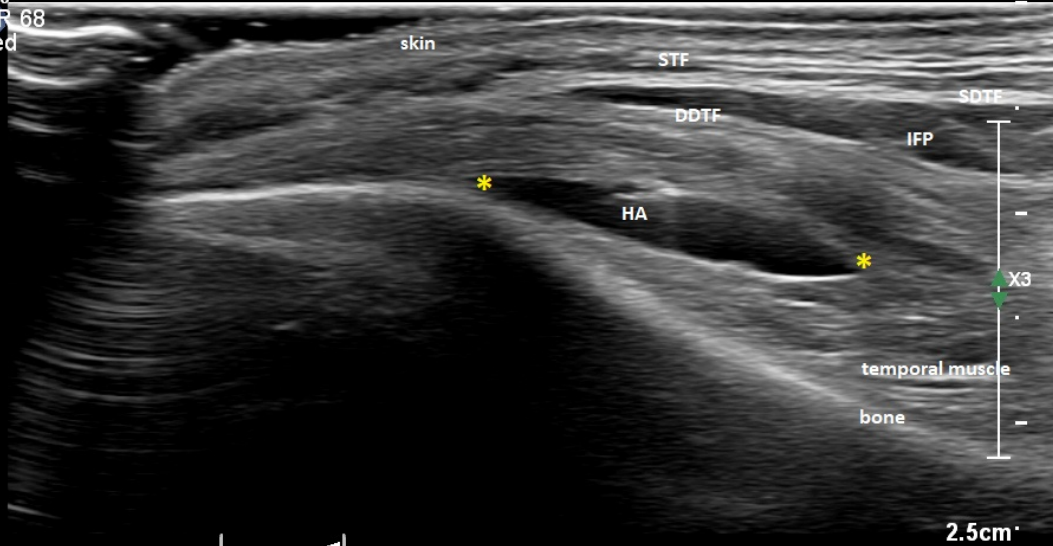
2D

38%

Dyn R 68

P Med

Res



TEMPLE SWIFT POINT

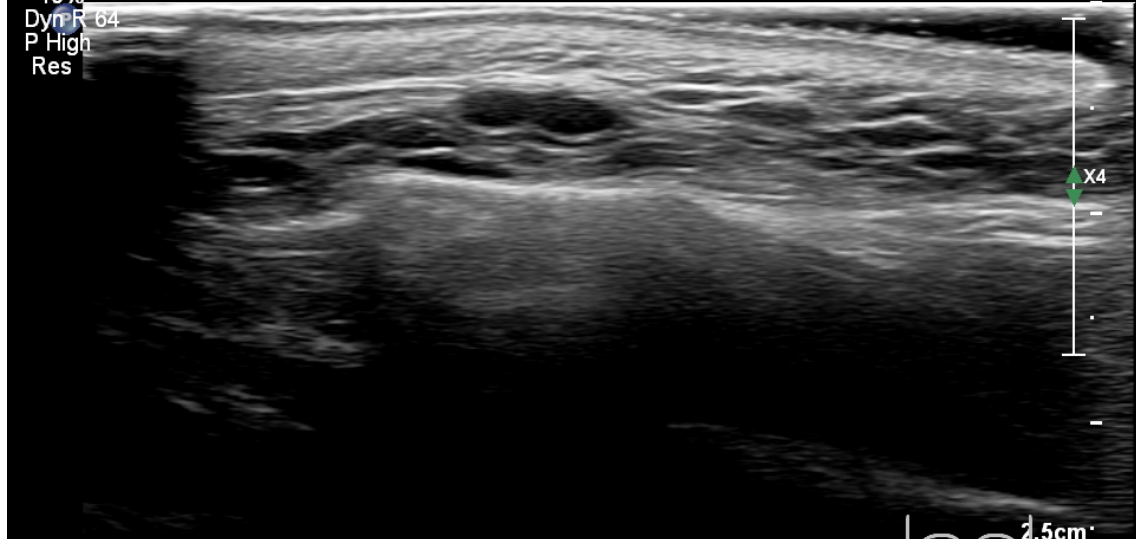
Cutaneous

TIS0.1 MI 0.5

eL18-4
65Hz
RS

M3

2D
40%
Dyn R 64
P High
Res



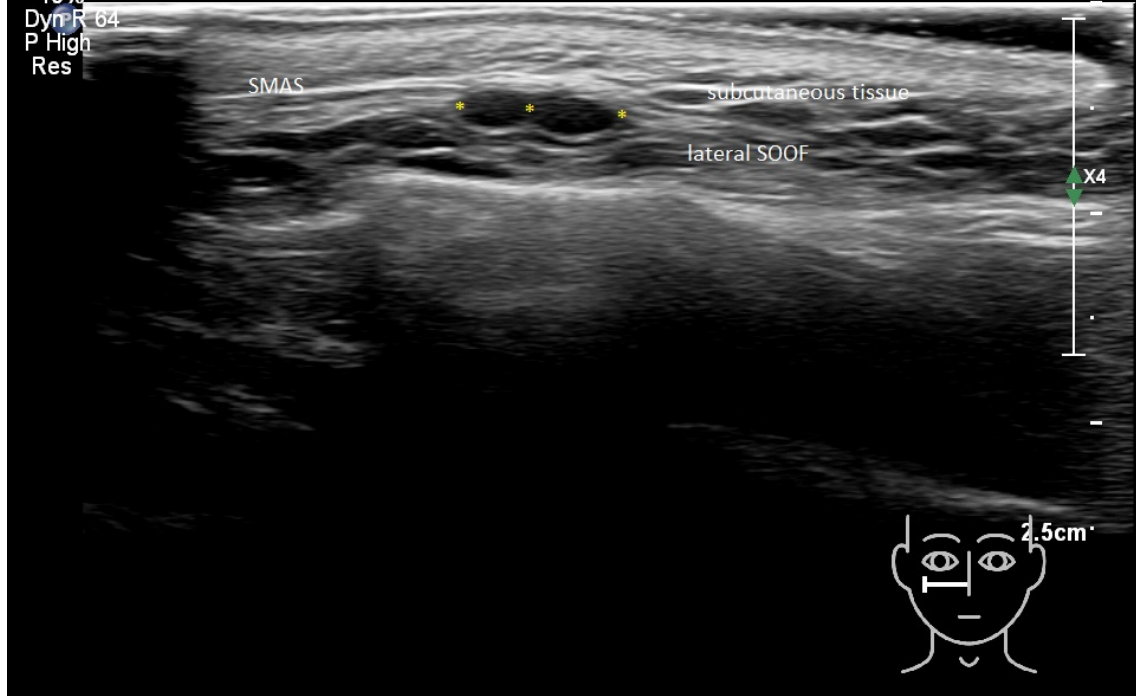
Cutaneous

TIS0.1 MI 0.5

eL18-4
65Hz
RS

M3

2D
40%
Dyn R 64
P High
Res

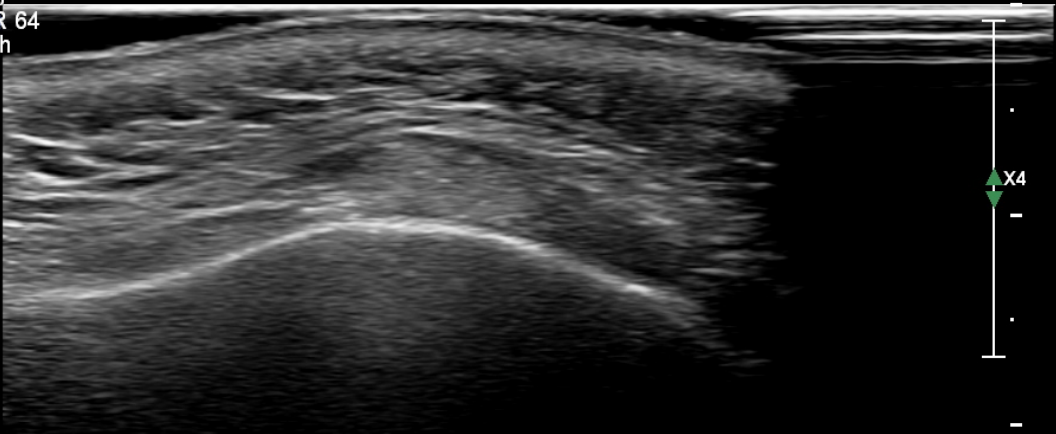


Cutaneous
eL18-4
65Hz
RS

TIS0.1 MI 0.5

M3

2D
38%
Dyn R 64
P High
Res



O R



Cutaneous

TIS0.1 MI 0.5

eL18-4

65Hz

RS

2D

38%

DynR 64

P High

Res

M3

superficial fatty layer

SMAS

skin

PLLA

deep fatty layer

zygoma

X4

✦ Dist 1.10 cm 0 R

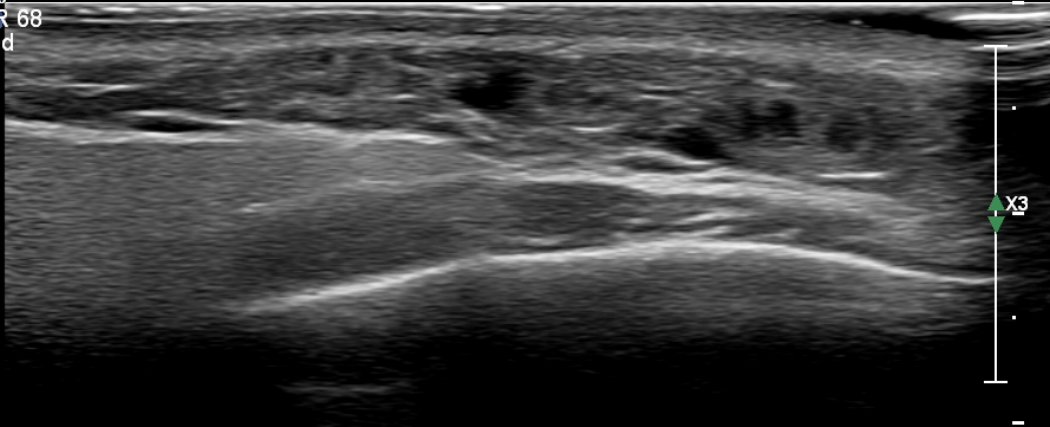


MSK Superfic
eL18-4
65Hz
RS

TIS0.1 MI 0.5

M3

2D
34%
Dyn R 68
P Med
Res



2.5cm

MSK Superfic

TIS0.1 MI 0.5

eL18-4

65Hz

RS

superficial fatty layer

skin

M3

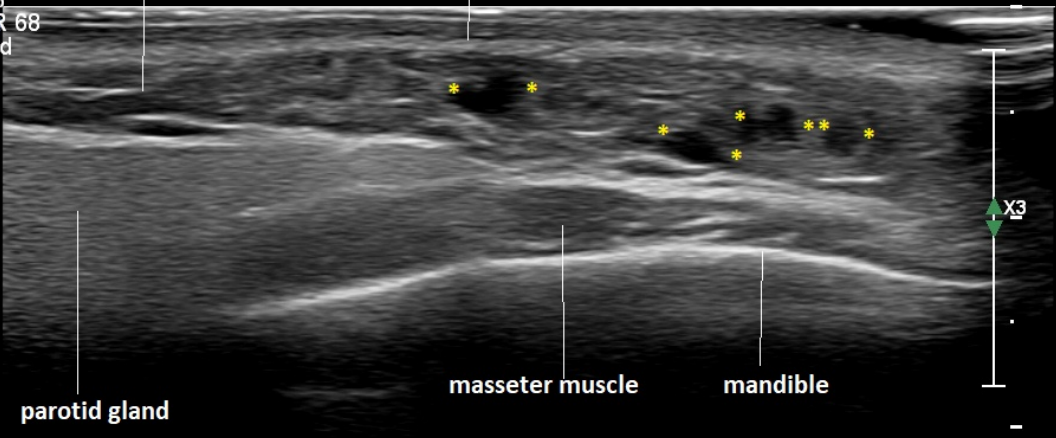
2D

34%

Dyn R 68

P Med

Res



parotid gland

masseter muscle

mandible

2.5cm

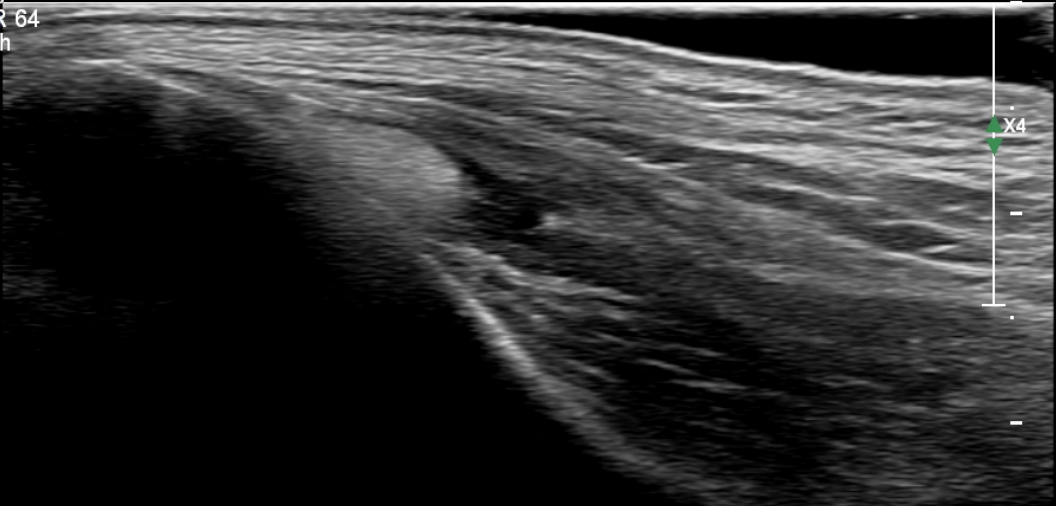
Cutaneous

TIS0.1 MI 0.5

eL18-4
65Hz
RS

M3

2D
38%
Dyn R 64
P High
Res



Cutaneous

eL18-4

65Hz

RS

2D

38%

Dyn R 64

P High

Res

superficial temporal fat pad

TIS0.1 MI 0.5

M3

skin

superficial fatty layer

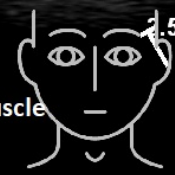
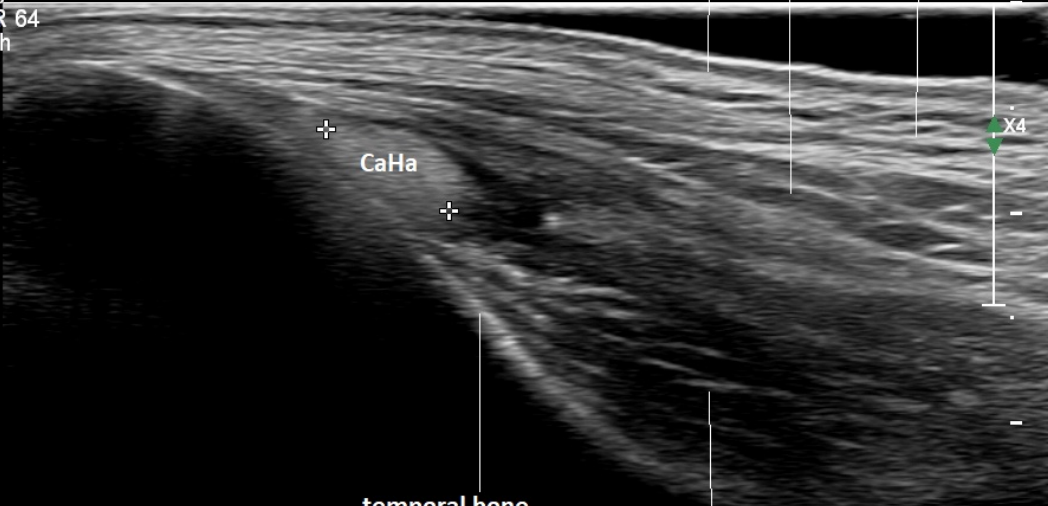
CaHa

temporal bone

temporal muscle

1.5cm

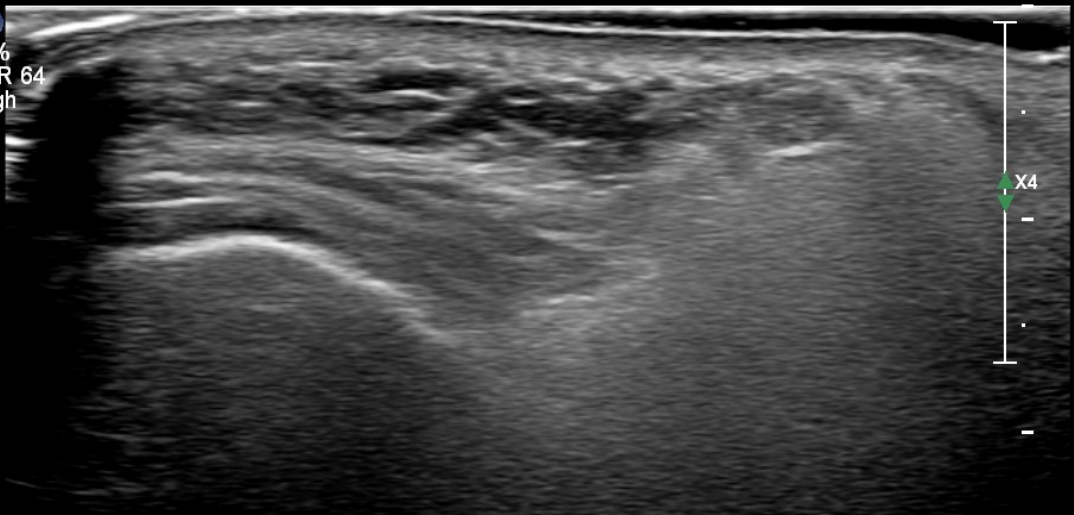
✦ Dist 0.702 cm



eL18-4
40Hz
RS

M3

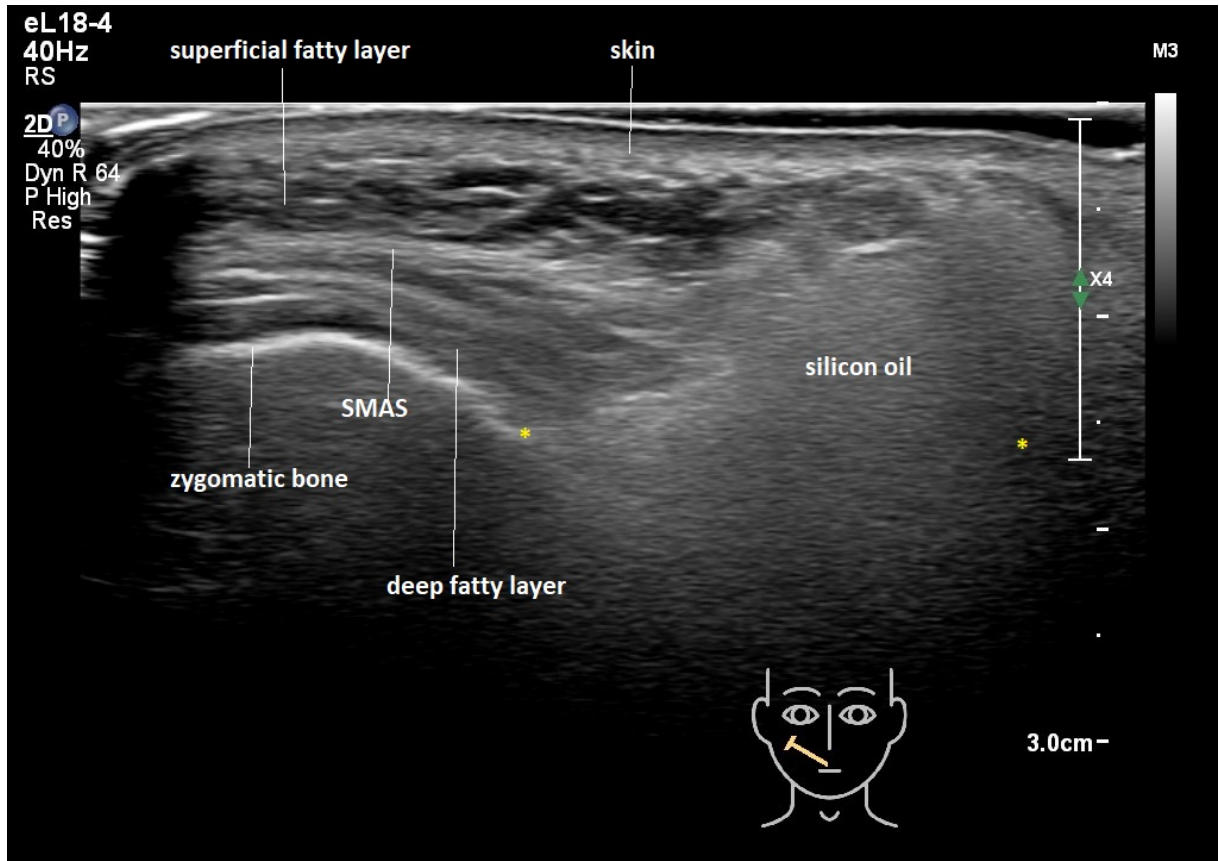
2D P
40%
Dyn R 64
P High
Res



X4



3.0cm-

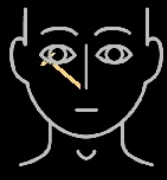
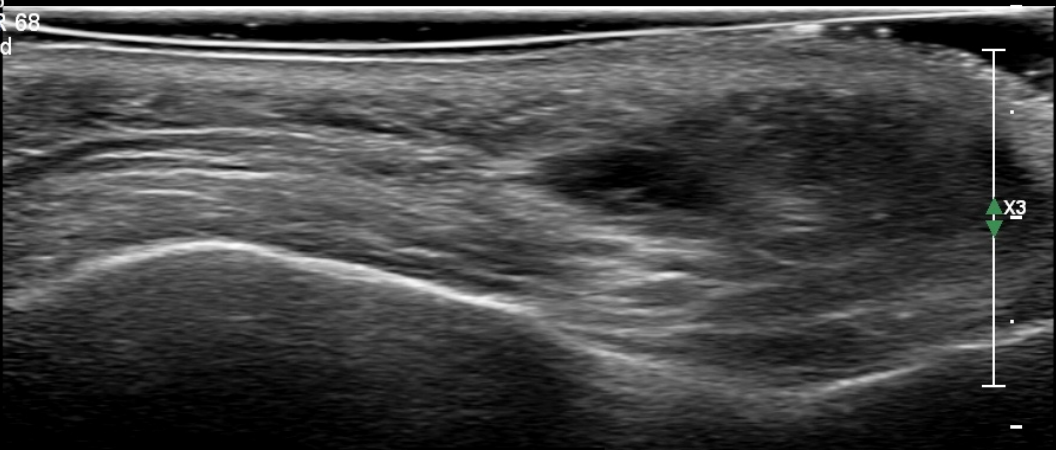


Cutaneous
eL18-4
65Hz
RS

TIS0.1 MI 0.5

M3

2D
38%
Dyn R 68
P Med
Res



2.5cm

Cutaneous

eL18-4

65Hz

RS

TIS0.1 MI 0.5

M3

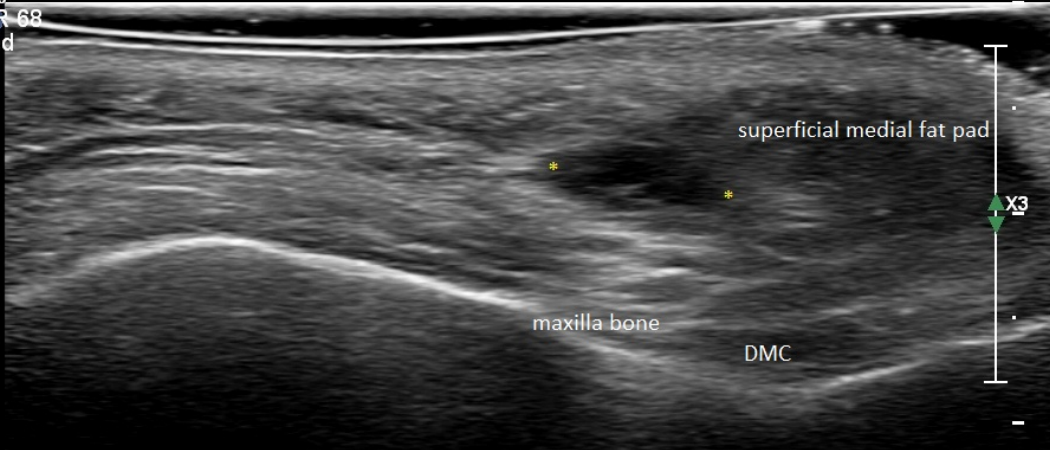
2D

38%

Dyn R 68

P Med

Res



2.5cm

Cutaneous

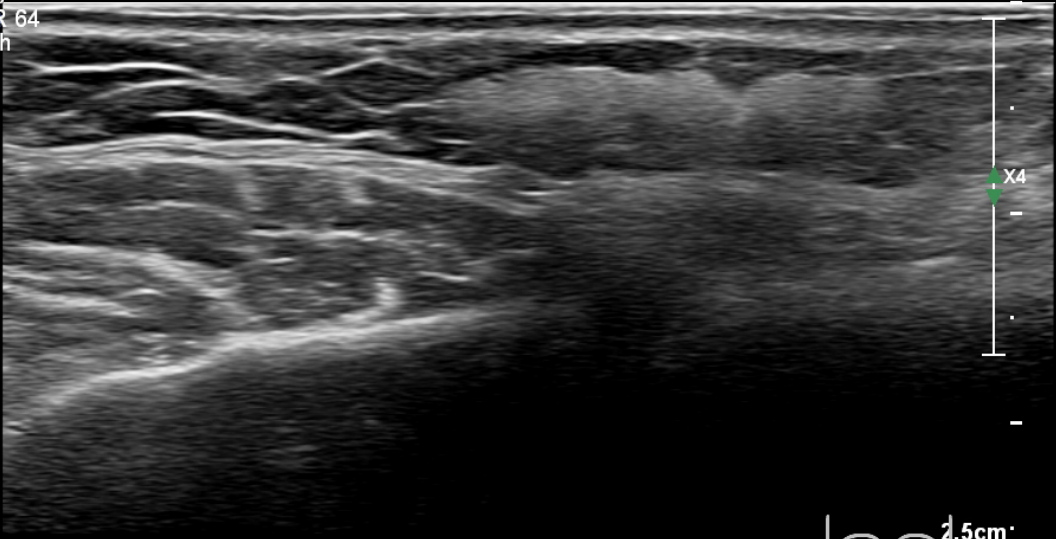
TIS0.1 MI 0.5

eL18-4
65Hz
RS

M3

2D

38%
Dyn R 64
P High
Res



Cutaneous

TIS0.1 MI 0.5

eL18-4

65Hz

RS

2D

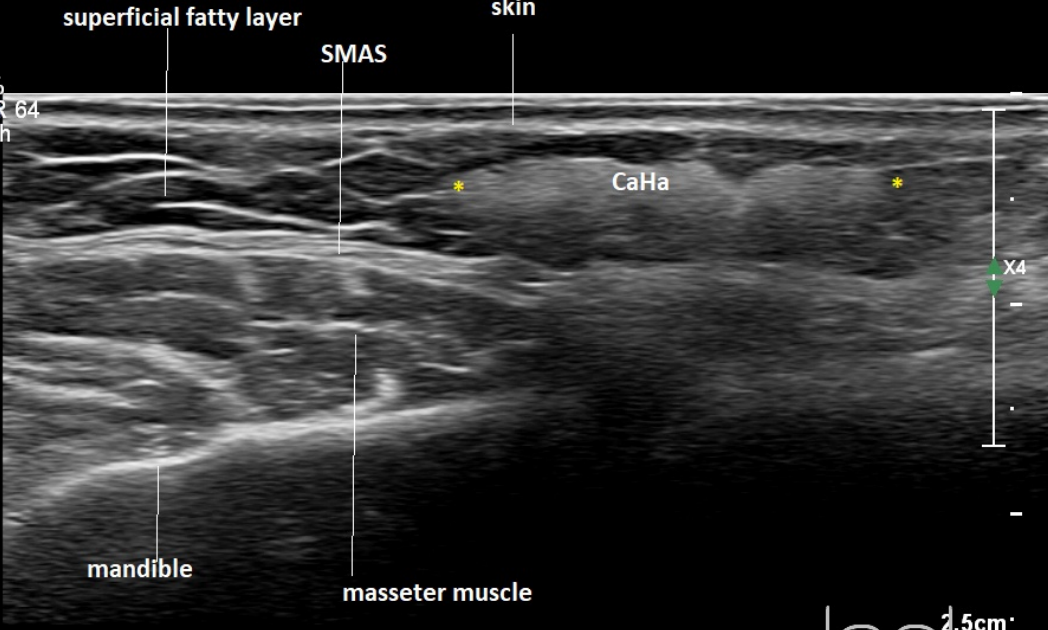
38%

Dyn R 64

P High

Res

M3



Cutaneous

TIS0.1 MI 0.5

eL18-4

65Hz

RS

M3

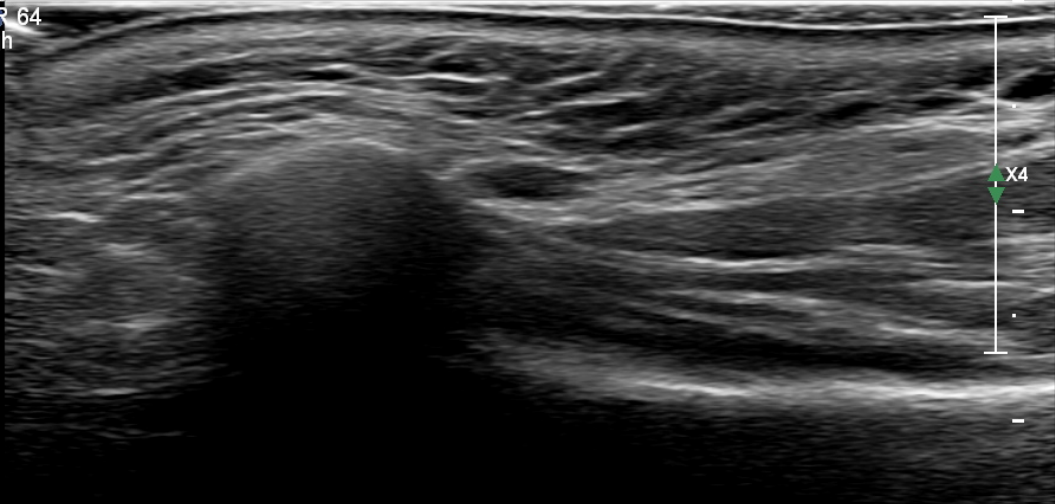
2D

38%

Dyn R 64

P High

Res



Cutaneous

eL18-4

65Hz

RS

2D

38%

Dyn R 64

P High

Res

TIS0.1 MI 0.5

M3

superficial fatty layer

SMAS

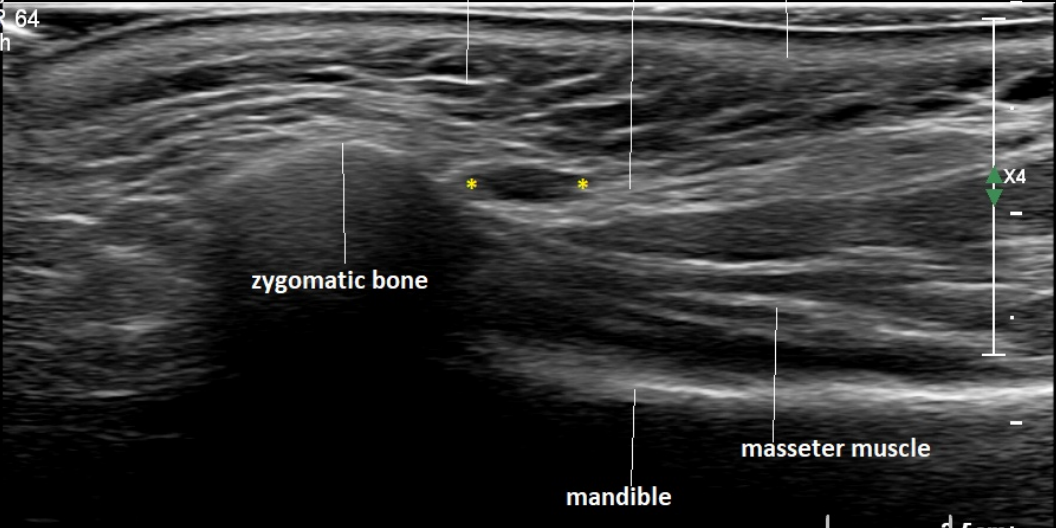
skin

zygomatic bone

masseter muscle

mandible

2.5cm

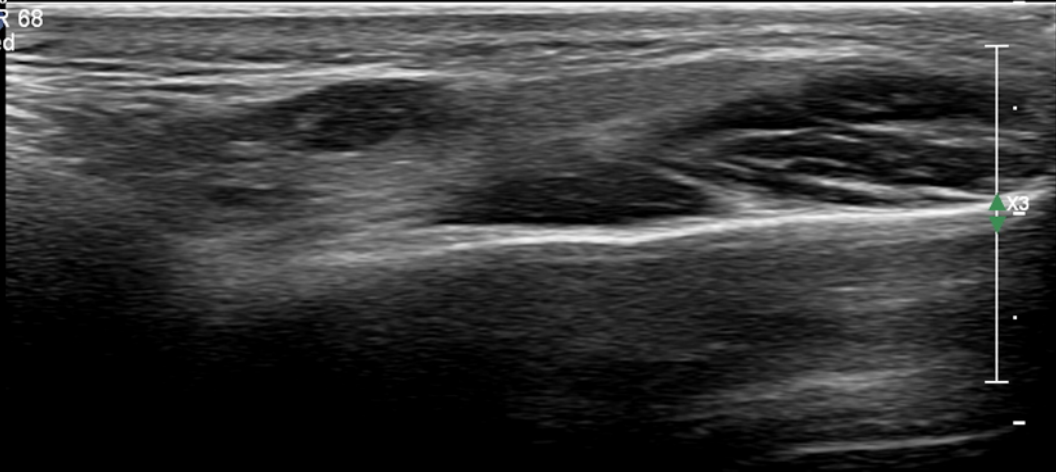


MSK Superfic
eL18-4
65Hz
RS

TIS0.1 MI 0.5

M3

2D
38%
Dyn R 68
P Med
Res



2.5cm

MSK Superfic

eL18-4

65Hz

RS

TIS0.1 MI 0.5

M3

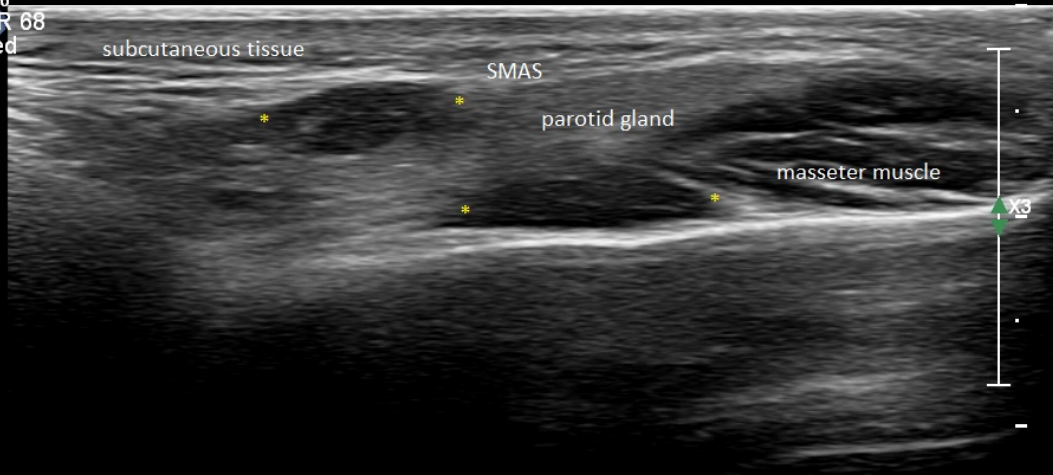
2D

38%

Dyn R 68

P Med

Res



2.5cm