

STANDARD POSITION 6: FOREHEAD



Cutaneous

Cutaneous

eL18-4

65Hz

RS

TIS0.1 MI 0.5

M3

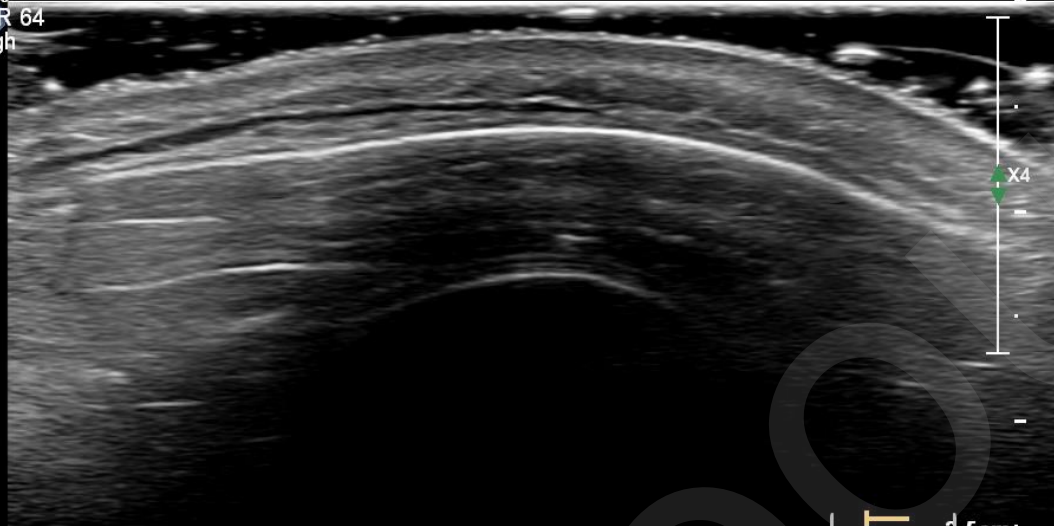
2D

38%

Dyn R 64

P High

Res



Cutaneous

eL18-4

15Hz

TIS0.4 MI 0.7

M3 M6
+2.5

2D

62%

Dyn R 62

P Med

Res

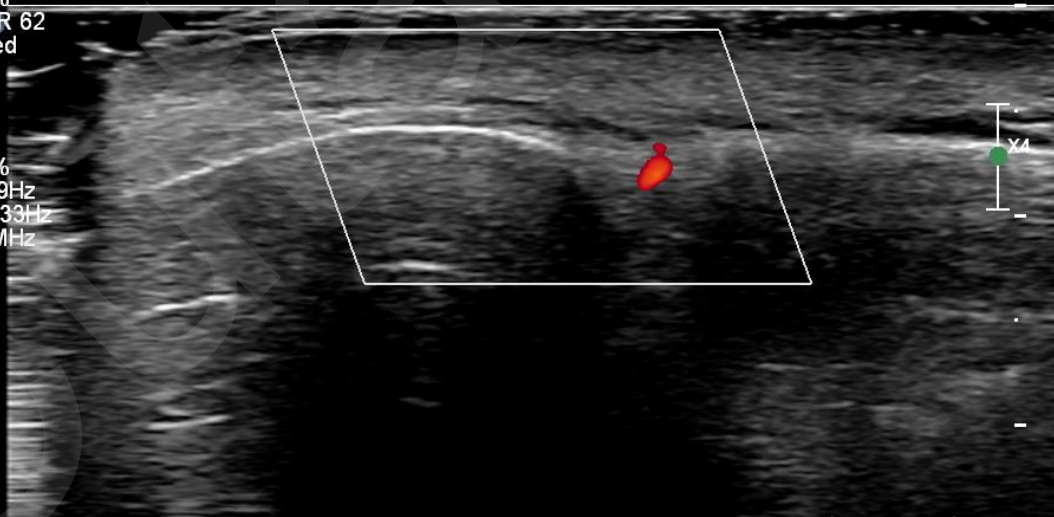
CF

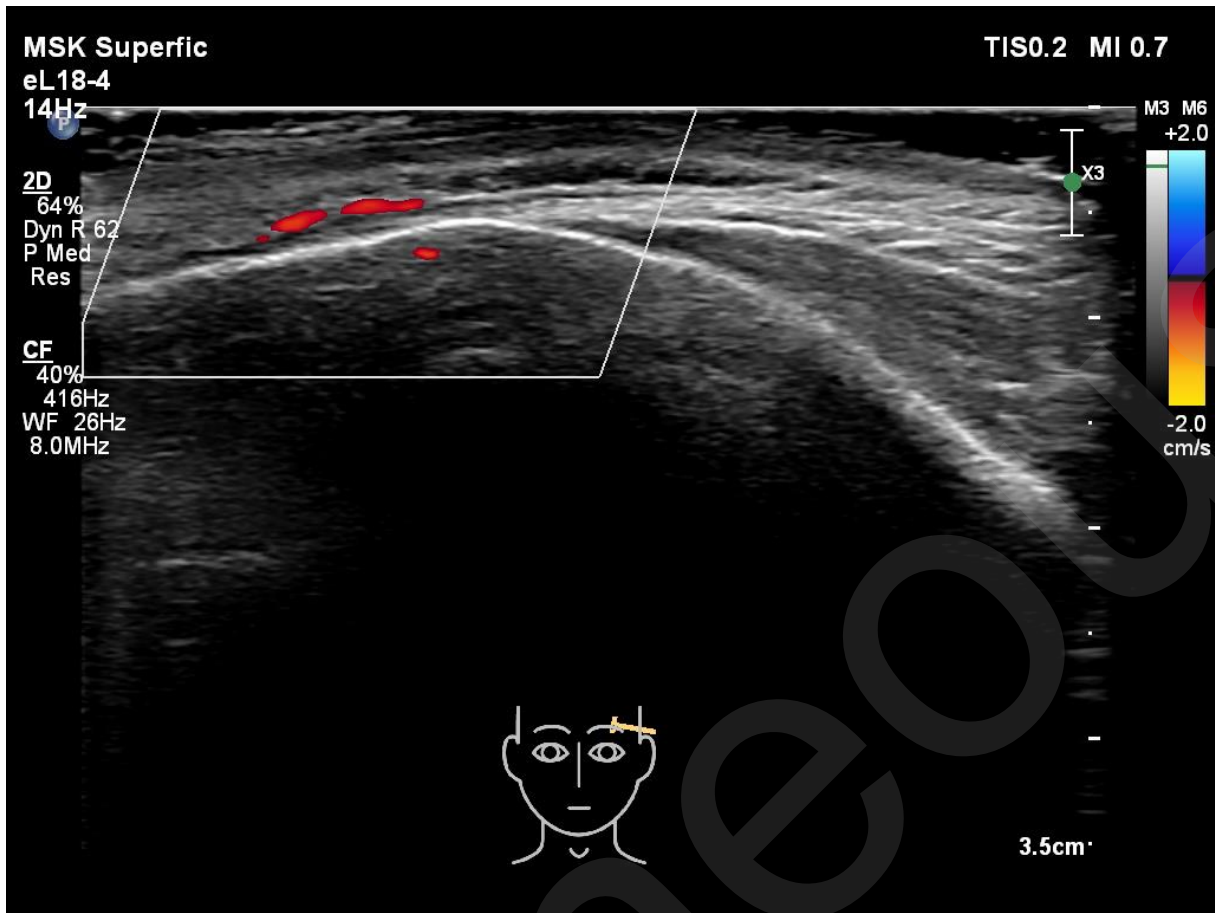
41%

519Hz

WF 33Hz

8.0MHz





STANDARD POSITION 6: FOREHEAD

Start horizontally.

- Find the borders of the frontalis muscles on both sides and mark these borders on your model

Proceed vertically

- Place the middle of the probe 3 cm above the eyebrow. Mark this spot on your model. Measure the thickness of the different layer: skin, subcutaneous fat, muscle , submuscular fat and bone.
- Follow muscle into galea
- Try to find the foramina on the superior orbital edge. Mark these on your model

Vessels

- Pick up the superficial temporal artery at the crest and follow it over the forehead. Do you see any anastomoses
- Place the probe vertical on the forehead where you expect the supratrochlear artery. Bring it into sight over the full length of the forehead and mark where it changes layers
- What is your normal injection location in the forehead? Mark it and look with duplex ultrasound at this area

Fillers

If you see any filler in your model:

- What type of filler is it ?
- Is it injected in the correct plane ?