

STANDARD POSITION 3: UPPER LIP



Cutaneous

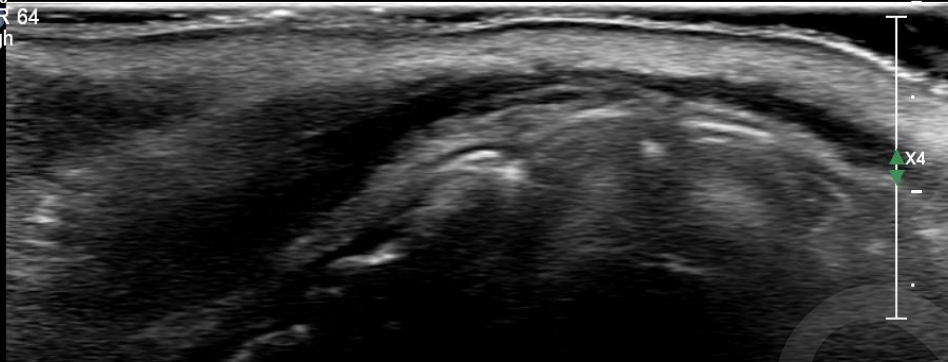
Cutaneous

eL18-4
65Hz
RS

TIS0.1 MI 0.5

M3

2D
38%
Dyn R 64
P High
Res



MSK Superfic

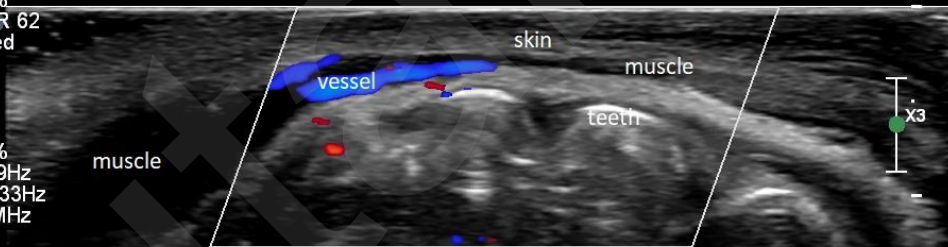
eL18-4
18Hz

TIS0.3 MI 0.6

M3 M6
+2.5

2D
62%
Dyn R 62
P Med
Res

CE
41%
519Hz
WF 33Hz
8.0MHz



L



M

2.5cm

Cutaneous

eL18-4

65Hz

RS

TIS0.1 MI 0.5

M3

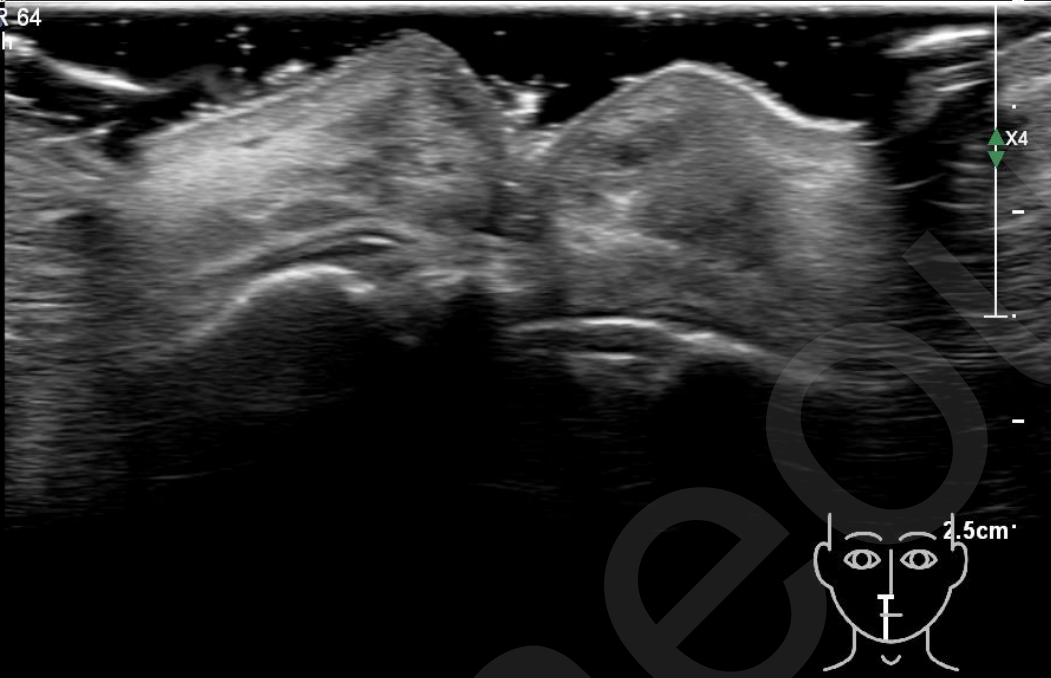
2D

38%

Dyn R 64

P High

Res



Cutaneous

eL18-4

18Hz

TIS0.4 MI 0.6

M3 M6
+2.5

2D

63%

Dyn R 62

P Med

Res

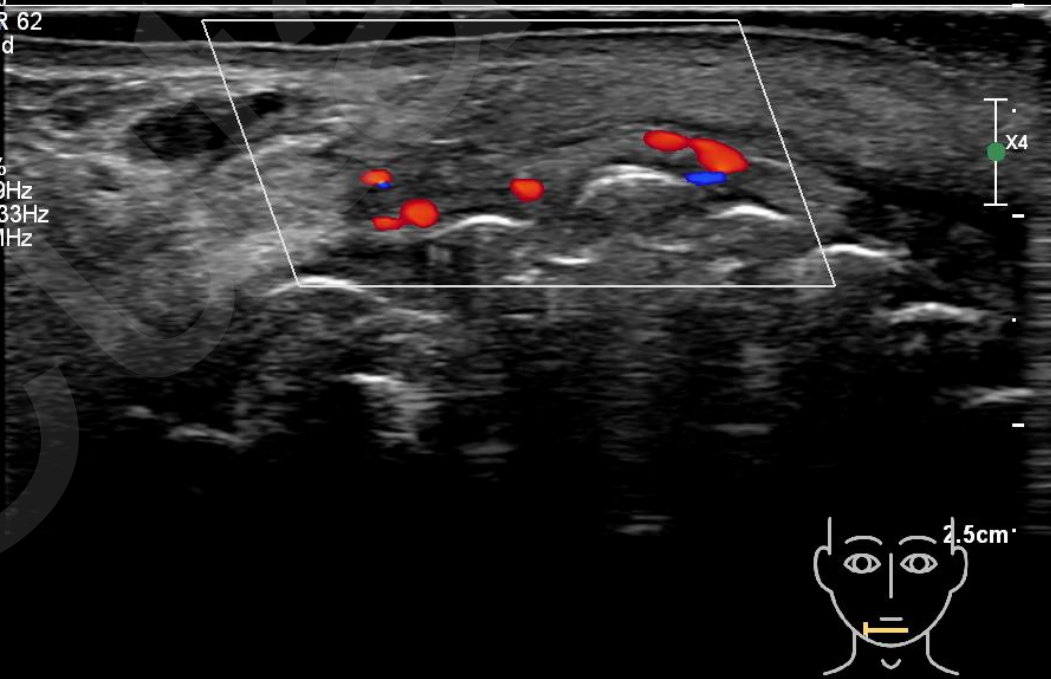
CF

41%

519Hz

WF 33Hz

8.0MHz



STANDARD POSITION 3: UPPER LIP

- Place the probe horizontally at one corner of the mouth. Locate the modiolus and follow the course of the orbicularis oris muscle.
Do you notice any round/oval hypoechoic or anechoic structures? Are these vessels or HA filler deposits?
It is important to know if any previous fillers are still present.
- Do you see the differences in structure of the skin/subcutaneous layer of the lips compared to the other areas of the face?
Do you think this may affect the treatment outcome?
- Place probe vertically half way the lips. If you would inject in the vermillion part of the lips, how does that correspond with the ultrasound image?
- Is there a submuscular fat pad on the upper and lower lip?
Rohrich describes there is one. He considers this the best injection area.

Vessels

- Put the duplex on and place the probe horizontally at the corner of the mouth. Locate in which layer the labial arteries are coursing.
Which area is safe to inject?
- Does your model have a columellar artery?
Would you inject there?

Fillers

- If you see any filler in your model:
 - *What type of filler is it?*
 - *Is it injected in the correct plane?*